

Central Serous Retinopathy (CSR)

Category(ies): Retina, Vitreous

Contributor: [Austin R. Fox, MD](#)



This color fundus photograph demonstrates subretinal fluid involving the fovea. There are multiple leakage points including the fovea on fluorescein angiography. In the late phase, one can see the classic "smokestack" leakage of dye.

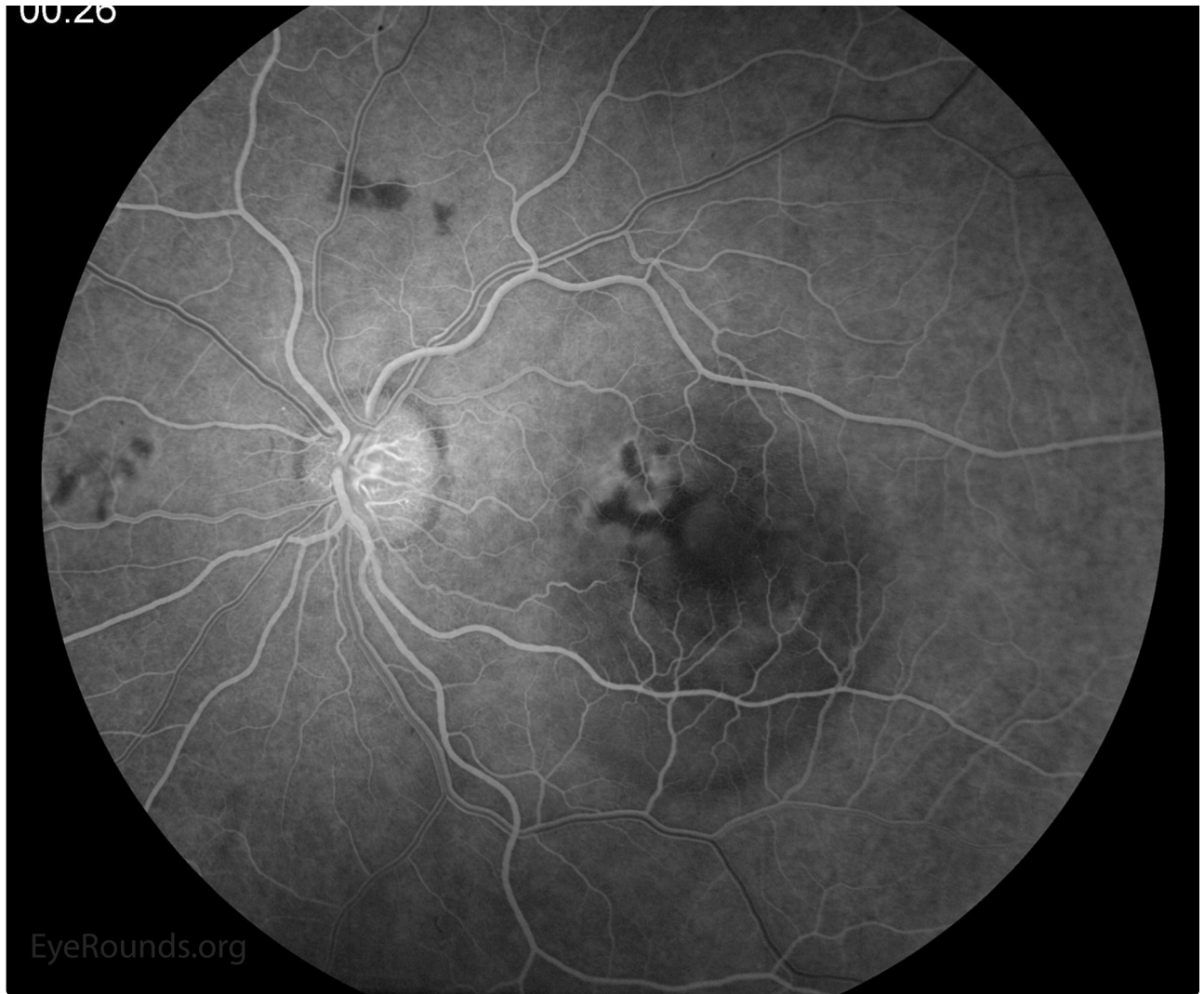


EyeRounds.org

Color fundus photograph demonstrates subretinal fluid involving the fovea

Enlarge Download

00:26



EyeRounds.org

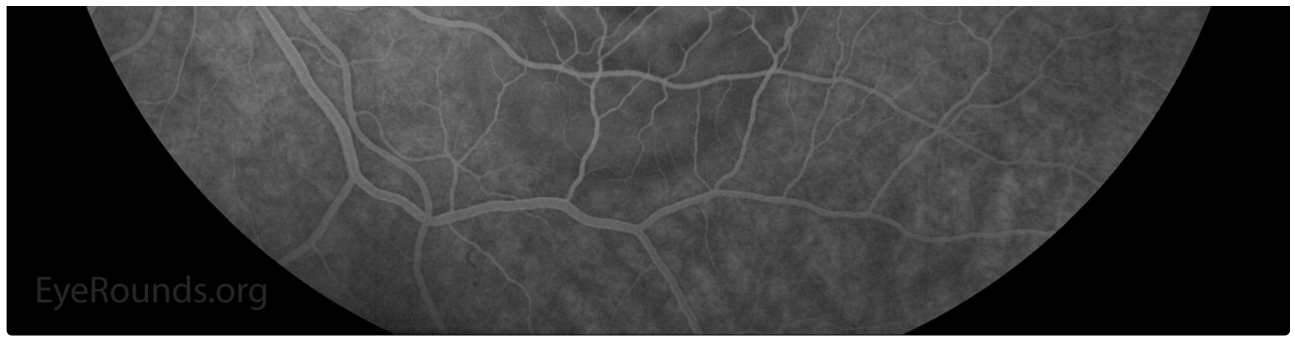
Fluorescein angiography 26 seconds

[Enlarge](#)

[Download](#)

02:33





EyeRounds.org

Fluorescein angiography 2 minutes 33 seconds

[Enlarge](#) [Download](#)



09:48

EyeRounds.org

Fluorescein angiography 9 minutes 48 seconds

[Enlarge](#) [Download](#)

Contributor: Jordan M. Graff, MD and Chet B. Patel, MD,

CSR (sometimes called Central Serous Chorioretinopathy or CSC) is seen most commonly in male & female patients between the ages of 20 and 40 years of age.



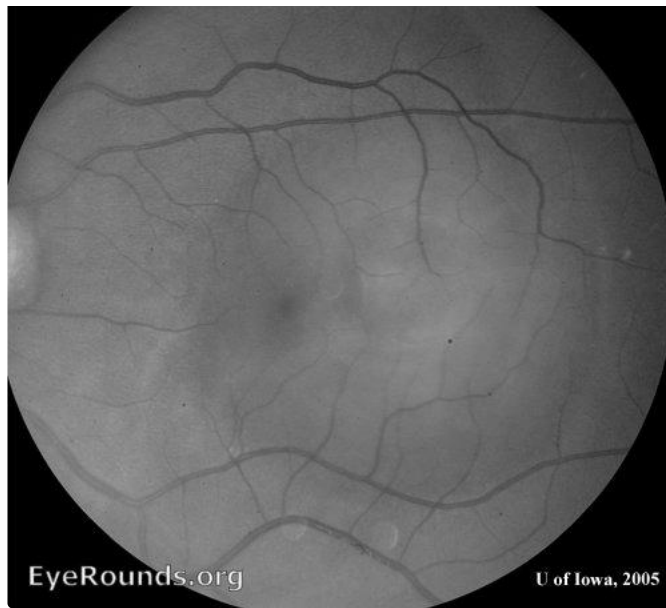


Figure 1, a large, elevated area of serous retinal detachment can be seen occupying much of the temporal macula. Within the central area of this detachment, there appears to be a second, smaller, ring of elevation. Fluorescein angiography and optical coherence tomography (OCT) confirmed that this smaller elevated ring is a pigment epithelial detachment (PED) within the larger area of serous retinal detachment (see Figures 2-4 and discussion below).

[Enlarge](#) [Download](#)



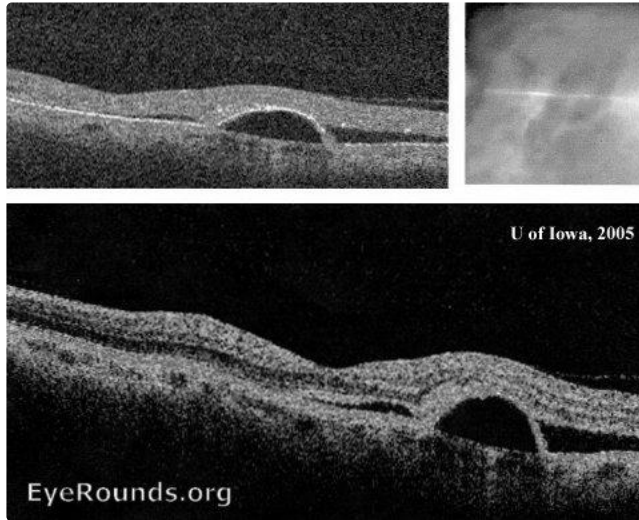
Early views of the fluorescein angiogram demonstrate a hot spot of hyperfluorescence that spreads to fill the PED. (In other classic cases of CSR, the hot spot may appear as a "smoke stack").

[Enlarge](#) [Download](#)



Late views with fluorescein reveal the pooling of fluid within the serous detachment, correlating with the clinical appearance of the fundus in Figure 1.

[Enlarge](#) [Download](#)

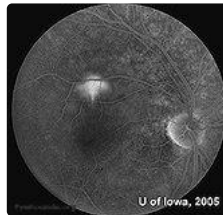


OCT images demonstrate a discrete blister of fluid underneath the RPE just temporal to the foveal depression. This defines the PED. The overlying serous retinal detachment is also evident.

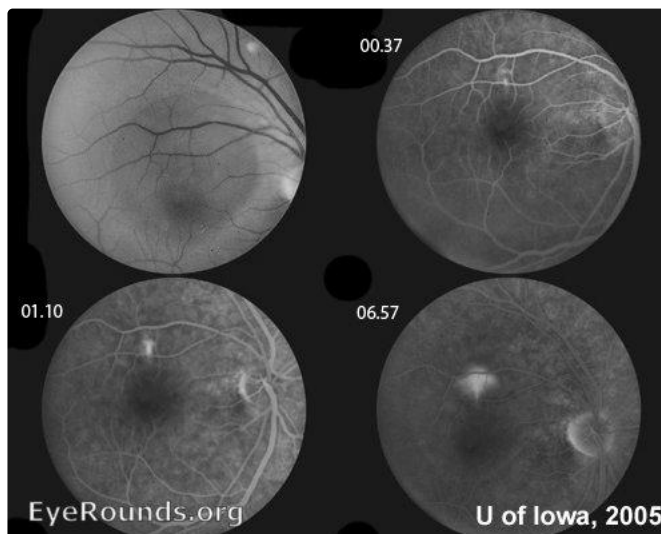
[Enlarge](#) [Download](#)

Contributor: Christopher C. Robinson, MD

A classic "smokestack" of leakage from the choroid is seen in this fluorescein angiogram. The fluid leaks into the subretinal space causing decreased visual acuity. Central serous retinopathy (CSR) is typically found in young males. There is a documented association with stress and steroid use.



[Enlarge](#) [Download](#)



[Enlarge](#) [Download](#)

Image Permissions:



Ophthalmic Atlas Images by EyeRounds.org, The University of Iowa are licensed under a [Creative Commons Attribution-NonCommercial-NoDerivs 3.0 Unported License](https://creativecommons.org/licenses/by-nc-nd/3.0/).

Address

University of Iowa
Roy J. and Lucille A. Carver College
of Medicine
Department of Ophthalmology and
Visual Sciences
200 Hawkins Drive
Iowa City, IA 52242

[Support Us](#)

Legal

Copyright © 2019 The University of
Iowa. All Rights Reserved
[Report an issue with this page](#)
[Web Privacy Policy](#) |
[Nondiscrimination Statement](#)

Related Links

[Cataract Surgery for Greenhorns](#)
[EyeTransillumination](#)
Gonioscopy.org
[Iowa Glaucoma Curriculum](#)
[Iowa Wet Lab](#)
[Patient Information](#)
[Stone Rounds](#)
[The Best Hits Bookshelf](#)

EyeRounds Social Media

Follow



[Receive notification of new cases,
sign up here](#)
[Contact Us](#)
[Submit a Suggestion](#)