

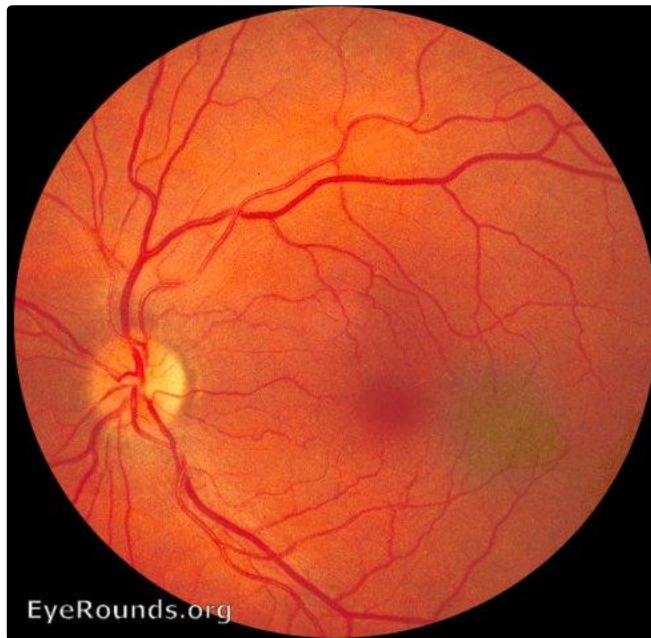
Choroidal Nevus

Category(ies): Retina, Vitreous

Contributor: Thomas A. Weingeist, PhD, MD



A typical choroidal nevus is slate gray in color and flat. Drusen are a sign of chronicity, i.e. they are present in a nevus that has been present for a long time. Nevi do not usually have orange pigmentation or subretinal fluid associated with them.



[Enlarge](#) [Download](#)



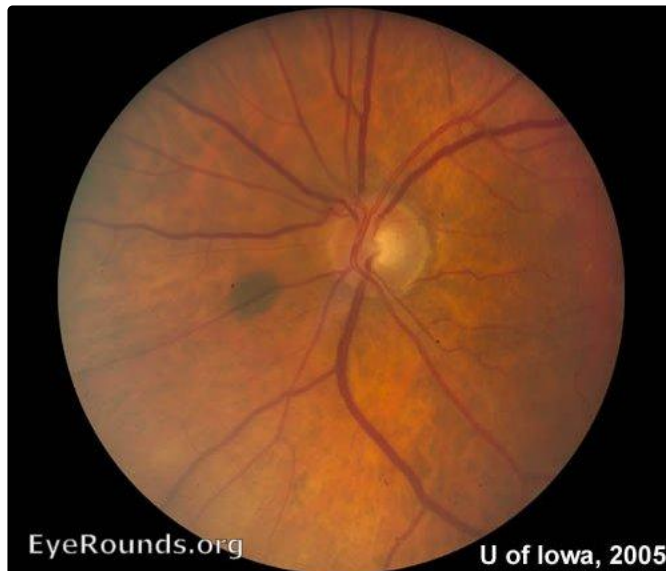


[Enlarge](#) [Download](#)



[Enlarge](#) [Download](#)

Contributor: Robert B Dinn, MD and Karen Gehrs, MD



[Enlarge](#) [Download](#)

Image Permissions:



Ophthalmic Atlas Images by EyeRounds.org, The University of Iowa are licensed under a [Creative Commons Attribution-NonCommercial-NoDerivs 3.0 Unported License](http://creativecommons.org/licenses/by-nc-nd/3.0/).

Address

University of Iowa
Roy J. and Lucille A. Carver College
of Medicine
Department of Ophthalmology and
Visual Sciences
200 Hawkins Drive
Iowa City, IA 52242

[Support Us](#)

Legal

Copyright © 2019 The University of
Iowa. All Rights Reserved
[Report an issue with this page](#)
[Web Privacy Policy |](#)
[Nondiscrimination Statement](#)

Related Links

[Cataract Surgery for Greenhorns](#)
[EyeTransillumination](#)
[Gonioscopy.org](#)
[Iowa Glaucoma Curriculum](#)
[Iowa Wet Lab](#)
[Patient Information](#)
[Stone Rounds](#)
[The Best Hits Bookshelf](#)

EyeRounds Social Media

Follow



Receive notification of new cases,
[sign up here](#)
[Contact Us](#)
[Submit a Suggestion](#)