

## Anterior polar cataract

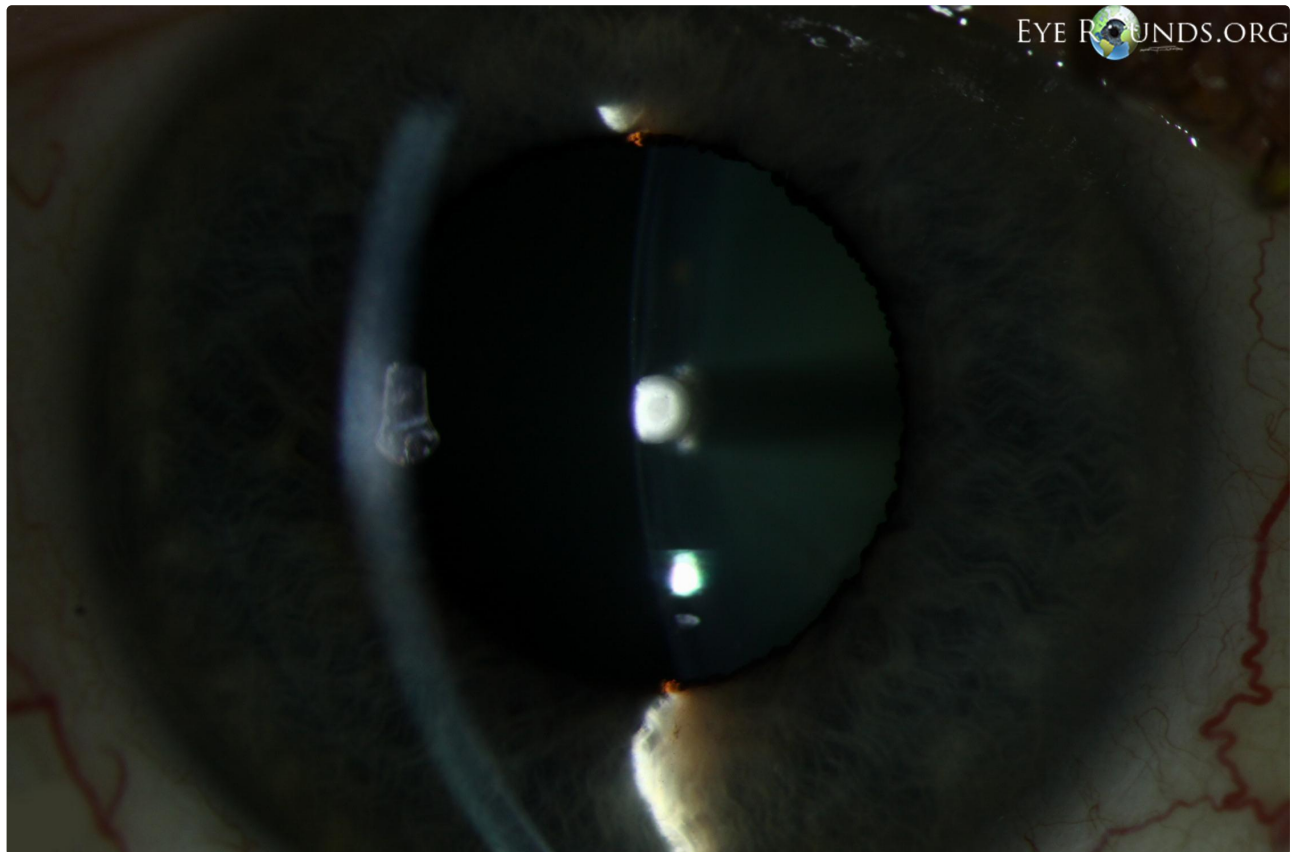
**Category(ies):** [Cataract](#), [Lens](#)

**Contributor:** [Jesse Vislisel, MD](#)

**Photographer:** [Carol Chan, CRA](#)



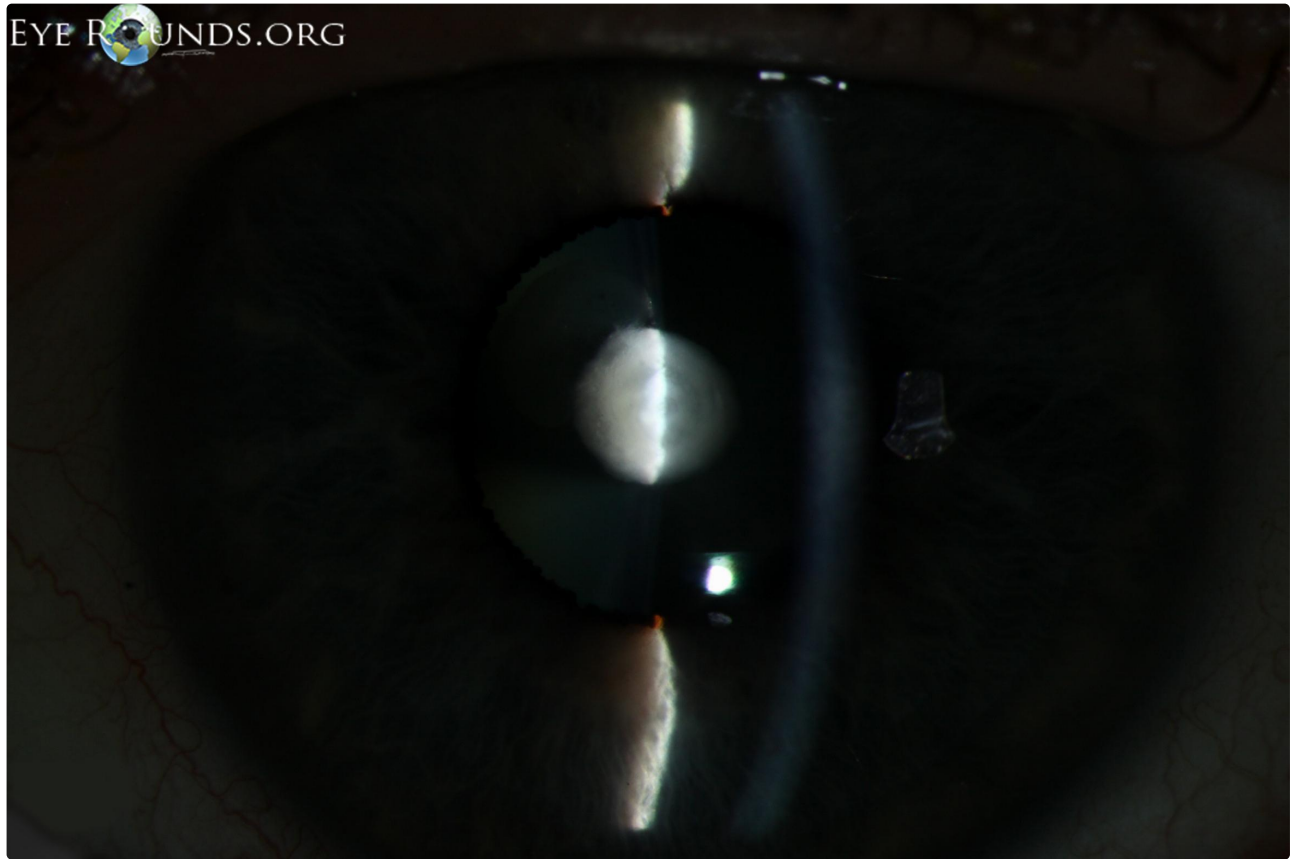
Anterior polar cataracts are congenital opacities involving the anterior capsule and subcapsular cortex. They are typically small, bilateral, symmetric, non-progressive, and not visually significant. The patient in these photographs had anterior polar cataracts that were more prominent in the left eye than the right. Only the left cataract was visually significant.



OD - Slit Lamp

[Enlarge](#)

[Download](#)

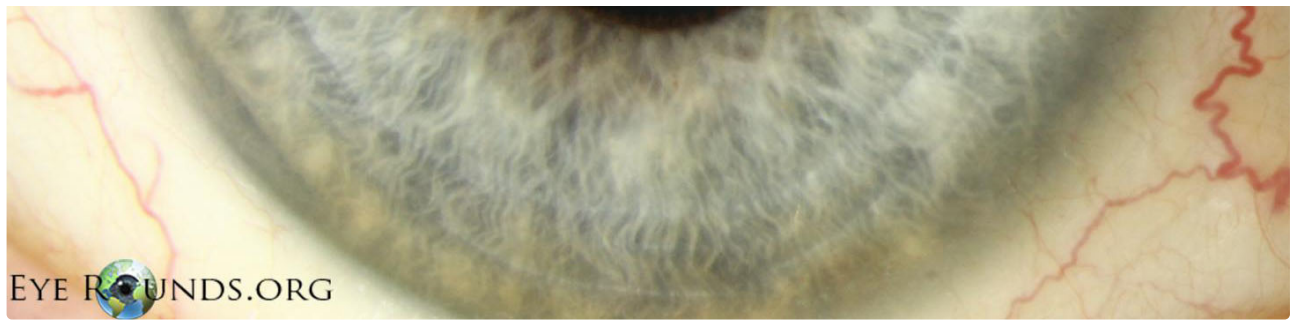


OS - Slit Lamp

[Enlarge](#)

[Download](#)



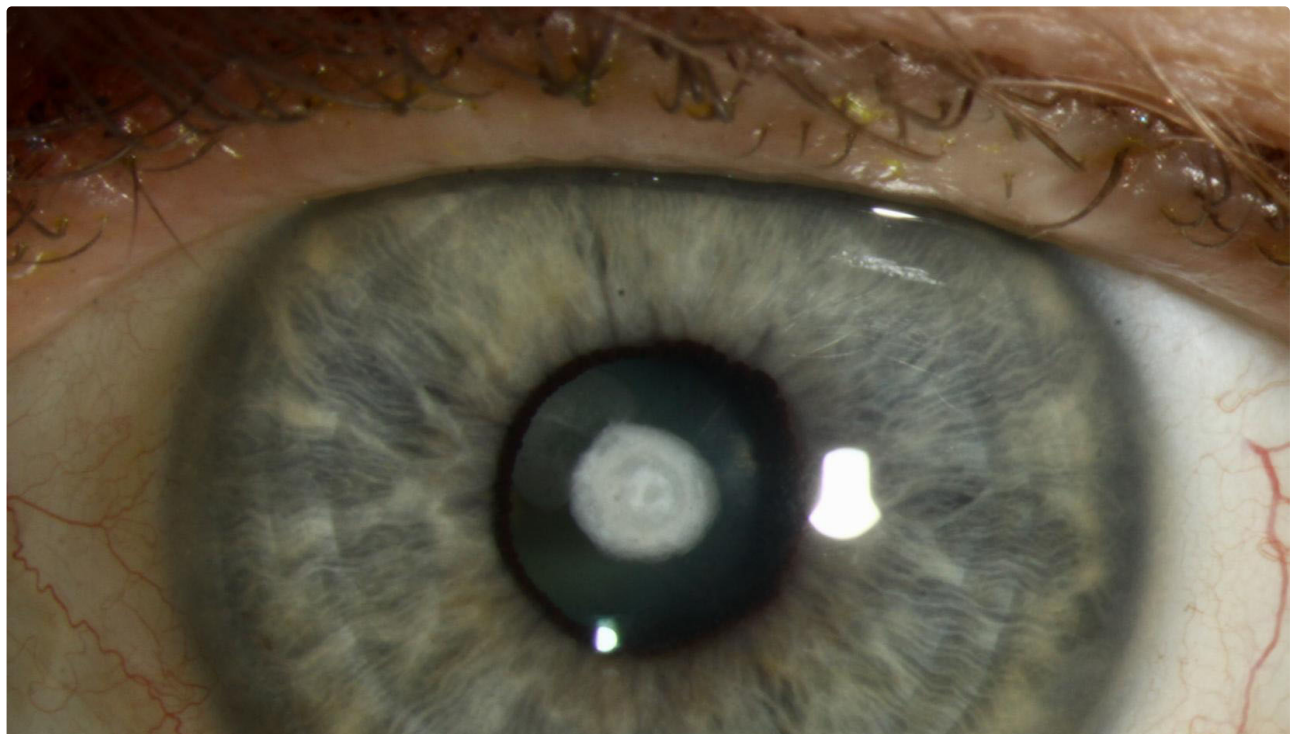


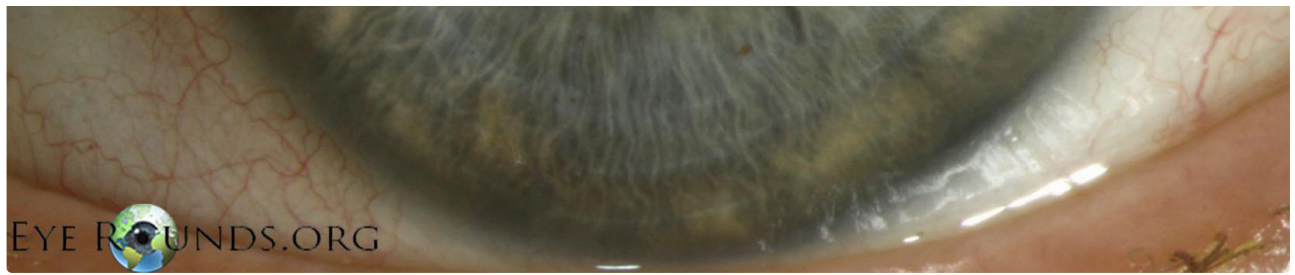
EYE ROUNDS.ORG

OD

[Enlarge](#)

[Download](#)





OS

[Enlarge](#)

[Download](#)

### Image Permissions:



Ophthalmic Atlas Images by [EyeRounds.org](http://EyeRounds.org), [The University of Iowa](http://The University of Iowa) are licensed under a [Creative Commons Attribution-NonCommercial-NoDerivs 3.0 Unported License](https://creativecommons.org/licenses/by-nc-nd/3.0/).

### Address

University of Iowa  
Roy J. and Lucille A. Carver College  
of Medicine  
Department of Ophthalmology and  
Visual Sciences  
200 Hawkins Drive  
Iowa City, IA 52242

[Support Us](#)

### Legal

Copyright © 2019 The University of  
Iowa. All Rights Reserved  
[Report an issue with this page](#)  
[Web Privacy Policy](#) |  
[Nondiscrimination Statement](#)

### Related Links

[Cataract Surgery for Greenhorns](#)  
[EyeTransillumination](#)  
[Gonioscopy.org](#)  
[Iowa Glaucoma Curriculum](#)  
[Iowa Wet Lab](#)  
[Patient Information](#)  
[Stone Rounds](#)  
[The Best Hits Bookshelf](#)

### EyeRounds Social Media

Follow



Receive notification of new cases,  
[sign up here](#)  
[Contact Us](#)  
[Submit a Suggestion](#)