

Enlarged corneal nerves / Prominent corneal nerves

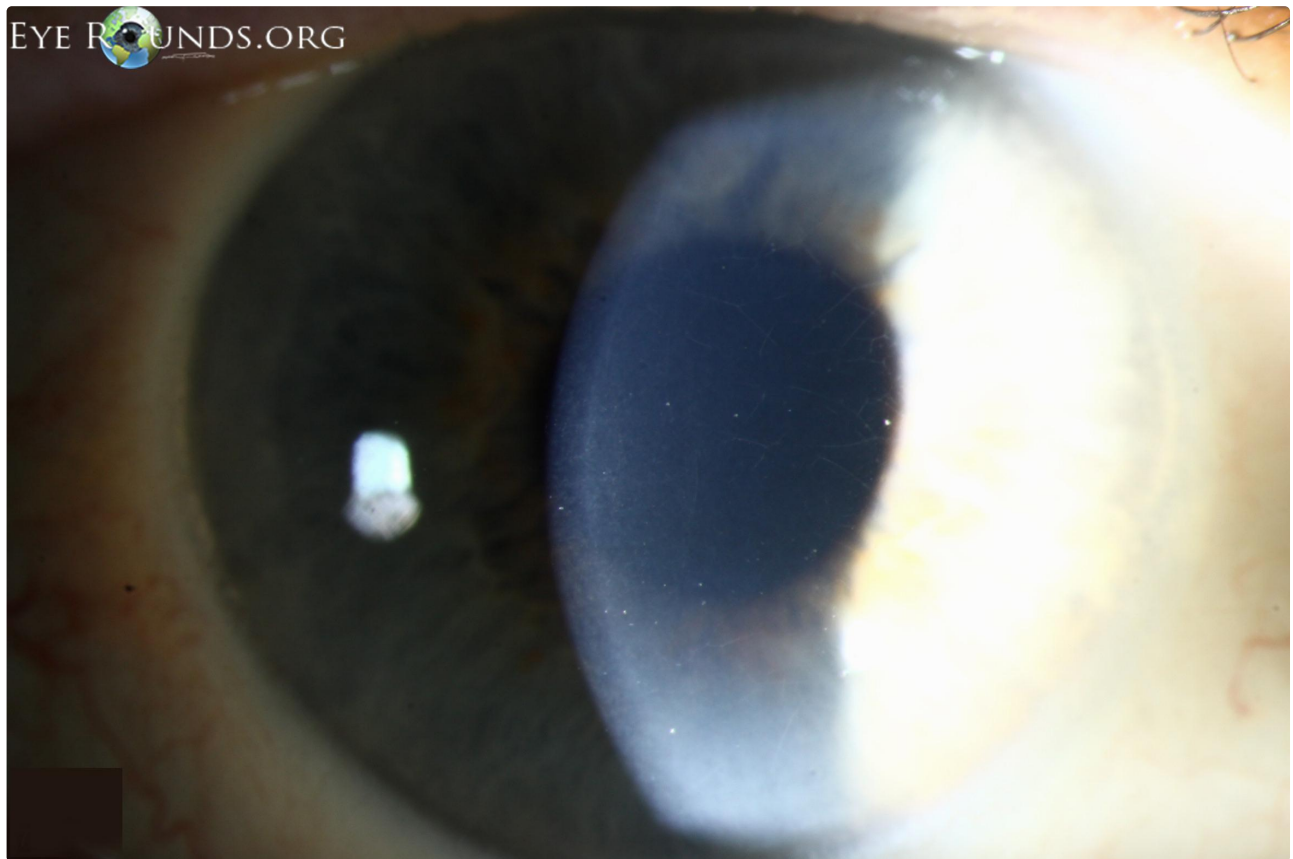
Category(ies): Cornea

Contributor: [Justin Risma, MD](#)

Photographer: Cindy Montague, CRA

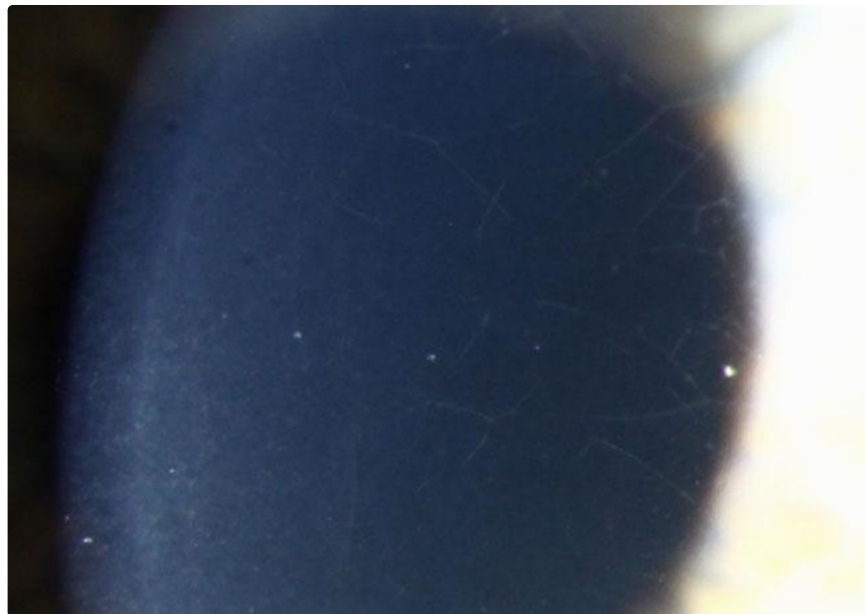


Prominent corneal nerves can be seen in many conditions including multiple endocrine neoplasia (MEN) type 2a and 2b, keratoconus, Fuch's dystrophy, leprosy, neurofibromatosis, Refsum disease, Riley-Day dysautonomia, acanthamoeba perineuritis, posterior polymorphous dystrophy, and multiple myeloma (as in this patient). They appear as fine, branching, linear, stromal opacities that extend from the limbus to the central cornea in a radial fashion.



[Enlarge](#)

[Download](#)



 [Enlarge](#)

 [Download](#)

Image Permissions:



Ophthalmic Atlas Images by [EyeRounds.org](#), [The University of Iowa](#) are licensed under a [Creative Commons Attribution-NonCommercial-NoDerivs 3.0 Unported License](#).

Address

University of Iowa
Roy J. and Lucille A. Carver College
of Medicine
Department of Ophthalmology and
Visual Sciences
200 Hawkins Drive
Iowa City, IA 52242

[Support Us](#)

Legal

Copyright © 2019 The University of
Iowa. All Rights Reserved
[Report an issue with this page](#)
[Web Privacy Policy](#) |
[Nondiscrimination Statement](#)

Related Links

[Cataract Surgery for Greenhorns](#)
[EyeTransillumination](#)
[Gonioscopy.org](#)
[Iowa Glaucoma Curriculum](#)
[Iowa Wet Lab](#)
[Patient Information](#)
[Stone Rounds](#)
[The Best Hits Bookshelf](#)

EyeRounds Social Media

Follow



Receive notification of new cases,
[sign up here](#)
[Contact Us](#)
[Submit a Suggestion](#)