

## Superior segmental optic nerve hypoplasia

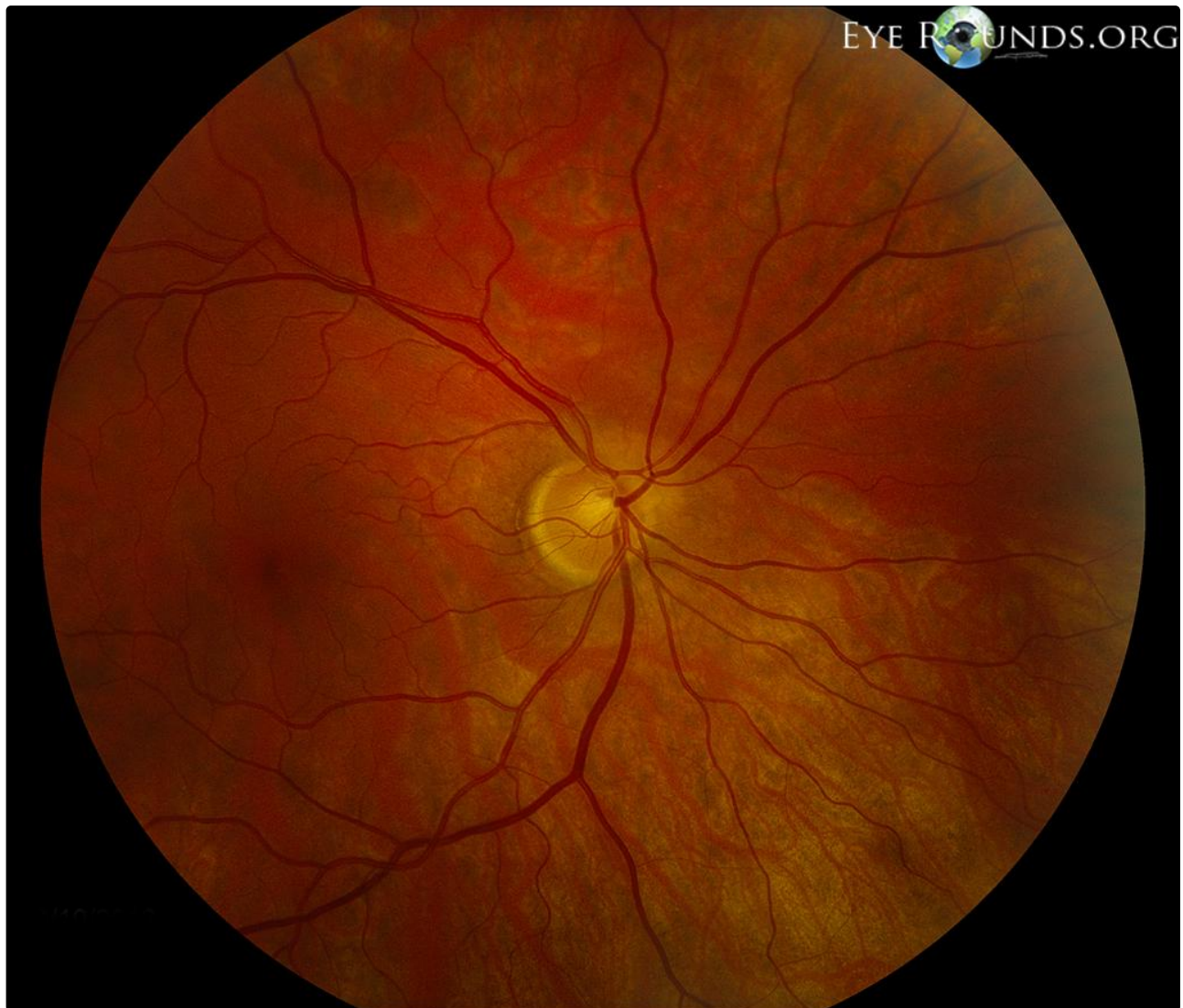
Category(ies): Neuro-ophthalmology, Pediatrics

Contributor: [Jesse Vislisel, MD](#)

Photographer: Carol Chan, CRA

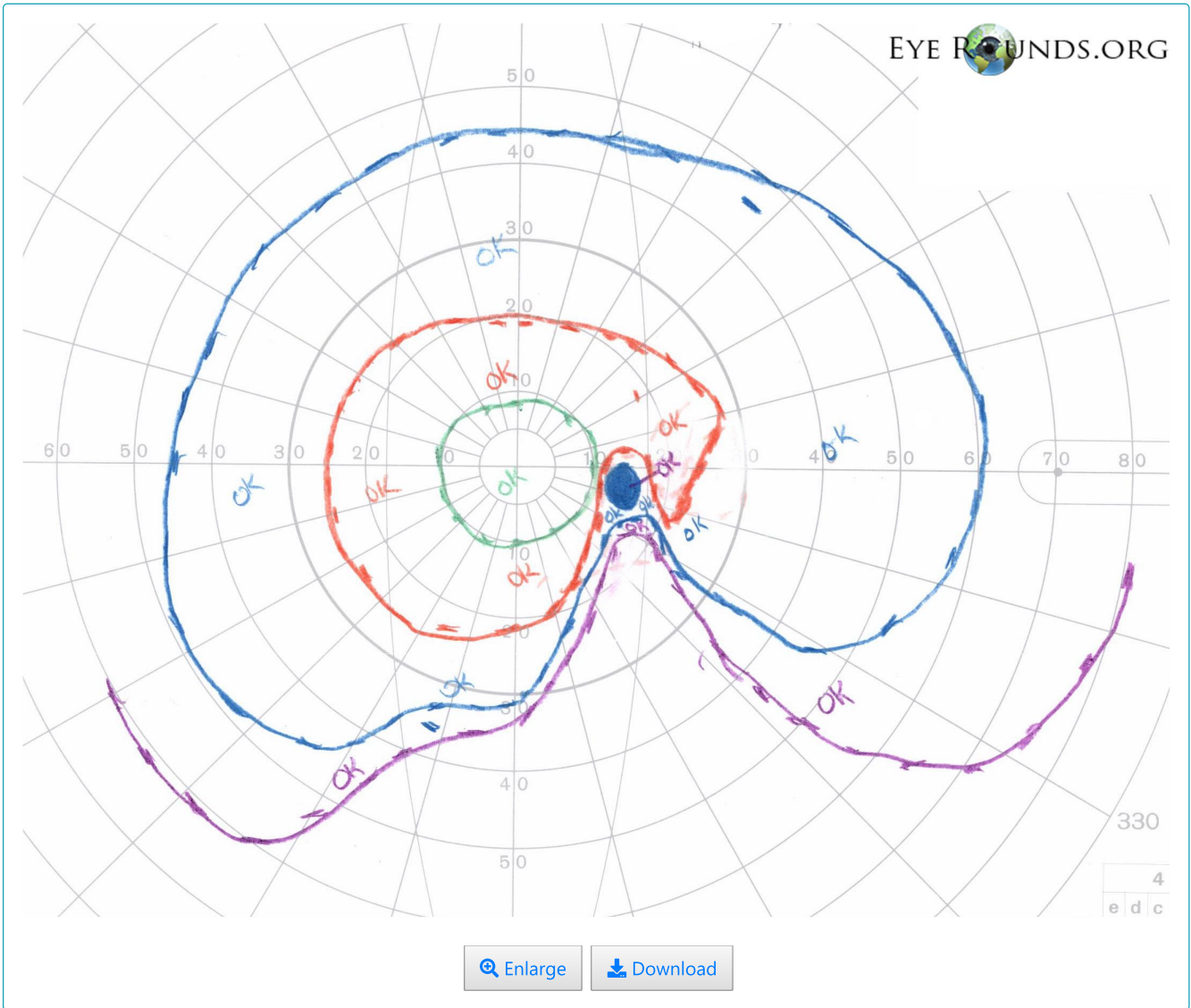


Superior segmental optic nerve hypoplasia (SSONH), also known as topless disc syndrome, is a subcategory of optic nerve hypoplasia in which the findings are generally localized to the superior aspect of the disc. In this condition, there is superior disc pallor, a superior peripapillary scleral halo, superior retinal nerve fiber layer thinning, and the central retinal artery has a relatively superior entrance to the eye. The condition often results in a corresponding inferior visual field defect as demonstrated in this Goldmann visual field. A strong association has been demonstrated between SSONH and maternal diabetes.



 Enlarge

 Download



**Image Permissions:**



Ophthalmic Atlas Images by [EyeRounds.org](http://EyeRounds.org), [The University of Iowa](http://The University of Iowa) are licensed under a [Creative Commons Attribution-NonCommercial-NoDerivs 3.0 Unported License](http://Creative Commons Attribution-NonCommercial-NoDerivs 3.0 Unported License).

**Address**

University of Iowa  
 Roy J. and Lucille A. Carver College  
 of Medicine  
 Department of Ophthalmology and  
 Visual Sciences  
 200 Hawkins Drive  
 Iowa City, IA 52242

Support Us

**Legal**

Copyright © 2019 The University of  
 Iowa. All Rights Reserved  
 Report an issue with this page  
 Web Privacy Policy |  
 Nondiscrimination Statement

**Related Links**

Cataract Surgery for Greenhorns  
 EyeTransillumination  
 Gonioscopy.org  
 Iowa Glaucoma Curriculum  
 Iowa Wet Lab  
 Patient Information  
 Stone Rounds  
 The Best Hits Bookshelf

**EyeRounds Social  
 Media**

Follow



Receive notification of new cases,  
 sign up here  
 Contact Us  
 Submit a Suggestion