

Glaukomflecken and iris atrophy after acute angle closure glaucoma

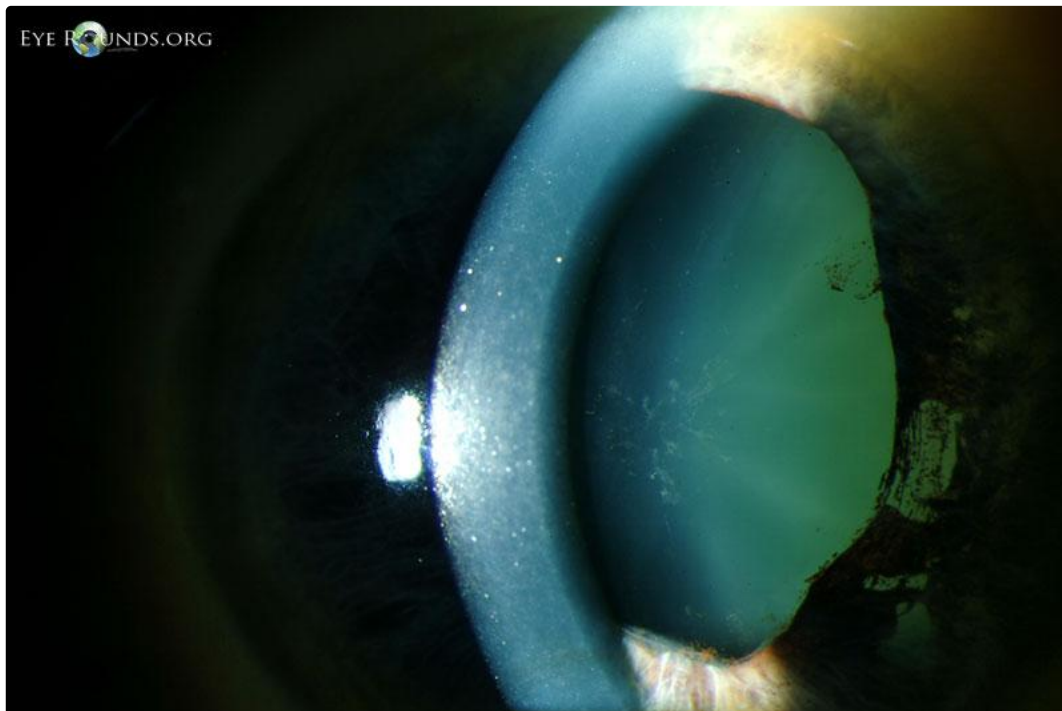
Category(ies): [Cataract](#), [Lens](#), [Iris](#), [Glaucoma](#)

Contributor: [Jesse Vislisel, MD](#)

Photographer: D. Brice Critser, CRA

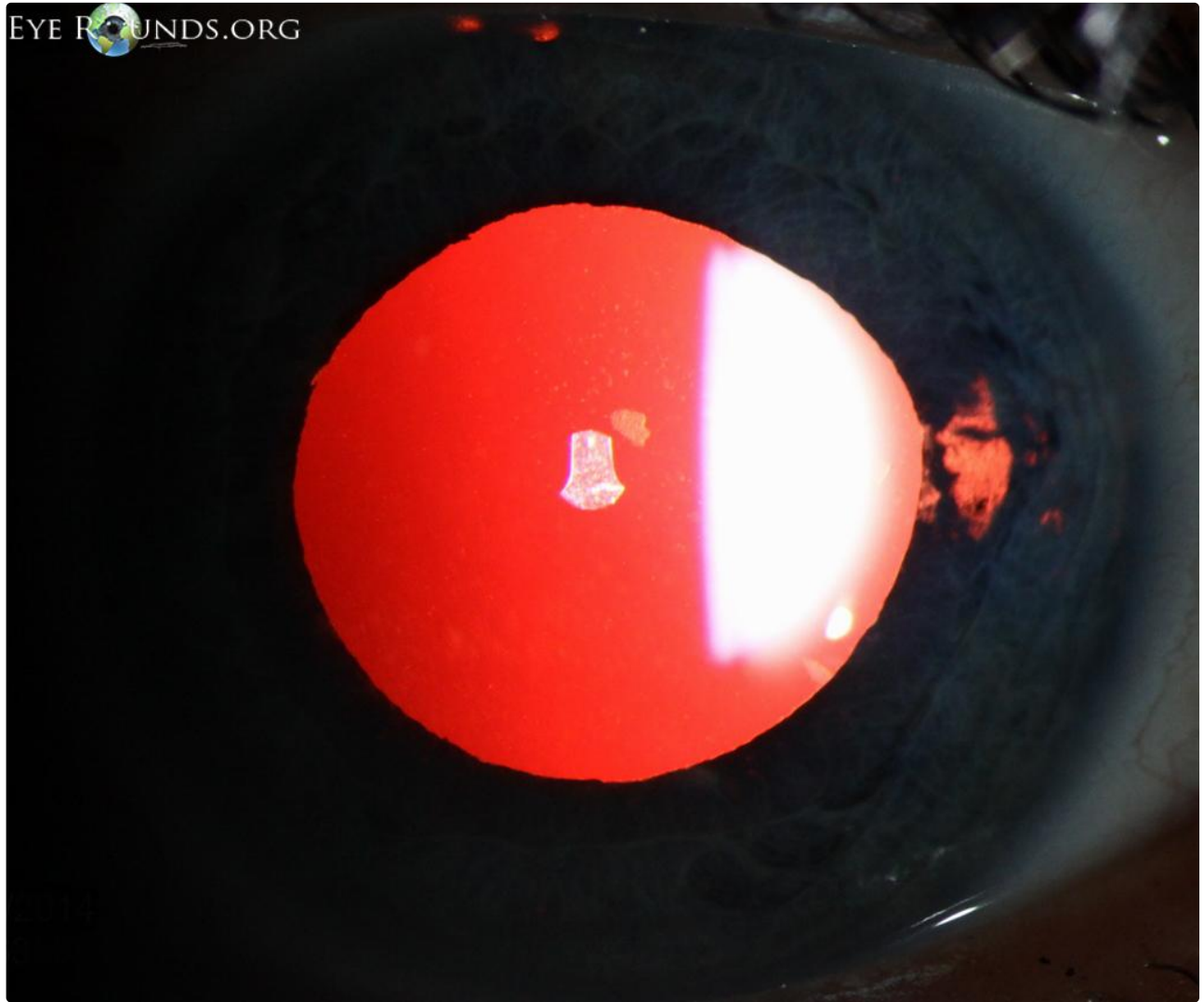


Glaukomflecken are small anterior subcapsular opacities secondary to lens epithelial necrosis resulting from acute angle closure glaucoma. These photographs from two different patients show central glaukomflecken and iris atrophy secondary to prior episodes of acute angle closure glaucoma..



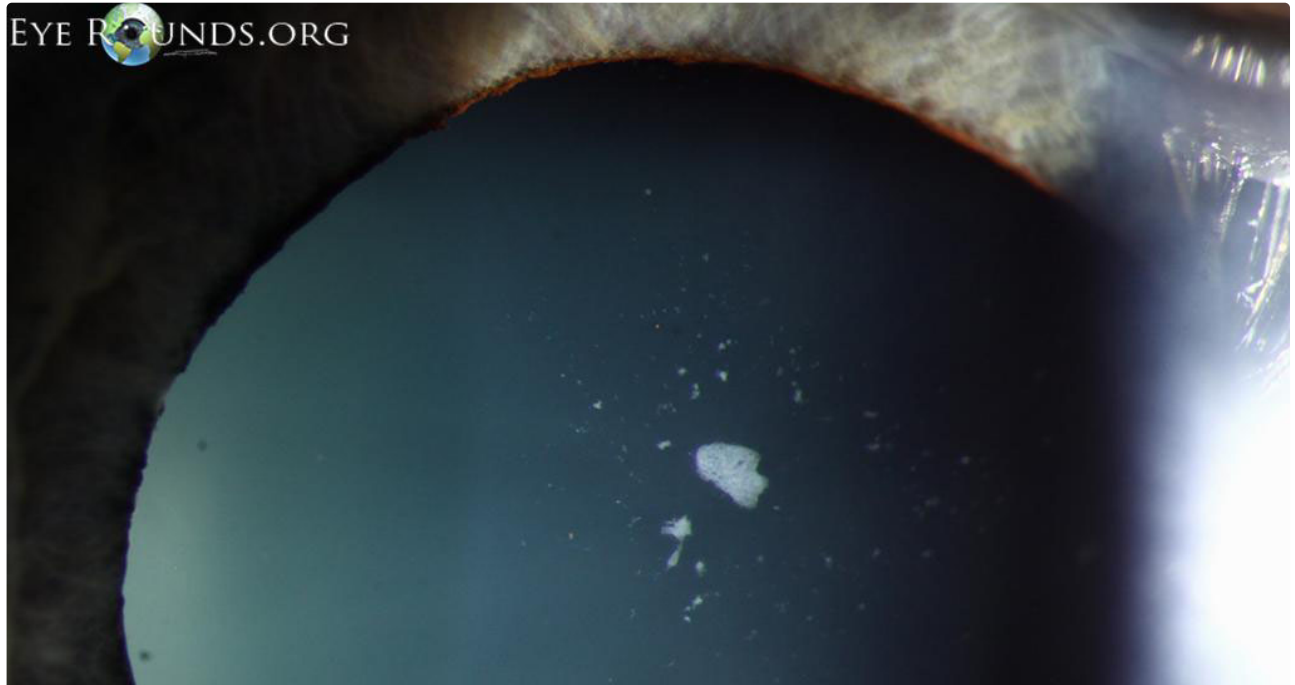
[Enlarge](#)

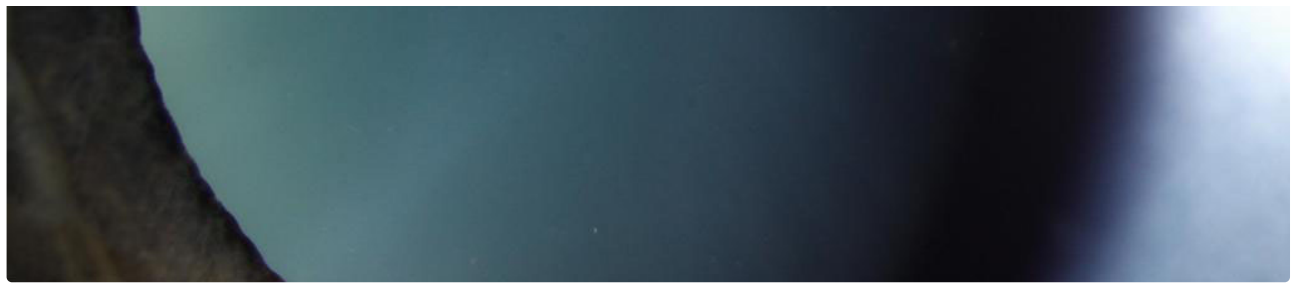
[Download](#)



[Enlarge](#)

[Download](#)





 [Enlarge](#)

 [Download](#)

Image Permissions:



Ophthalmic Atlas Images by [EyeRounds.org](#), [The University of Iowa](#) are licensed under a [Creative Commons Attribution-NonCommercial-NoDerivs 3.0 Unported License](#).

Address

University of Iowa
Roy J. and Lucille A. Carver College
of Medicine
Department of Ophthalmology and
Visual Sciences
200 Hawkins Drive
Iowa City, IA 52242

[Support Us](#)

Legal

Copyright © 2019 The University of
Iowa. All Rights Reserved
[Report an issue with this page](#)
[Web Privacy Policy](#) |
[Nondiscrimination Statement](#)

Related Links

[Cataract Surgery for Greenhorns](#)
[EyeTransillumination](#)
[Gonioscopy.org](#)
[Iowa Glaucoma Curriculum](#)
[Iowa Wet Lab](#)
[Patient Information](#)
[Stone Rounds](#)
[The Best Hits Bookshelf](#)

EyeRounds Social Media

Follow



Receive notification of new cases,
[sign up here](#)
[Contact Us](#)
[Submit a Suggestion](#)