

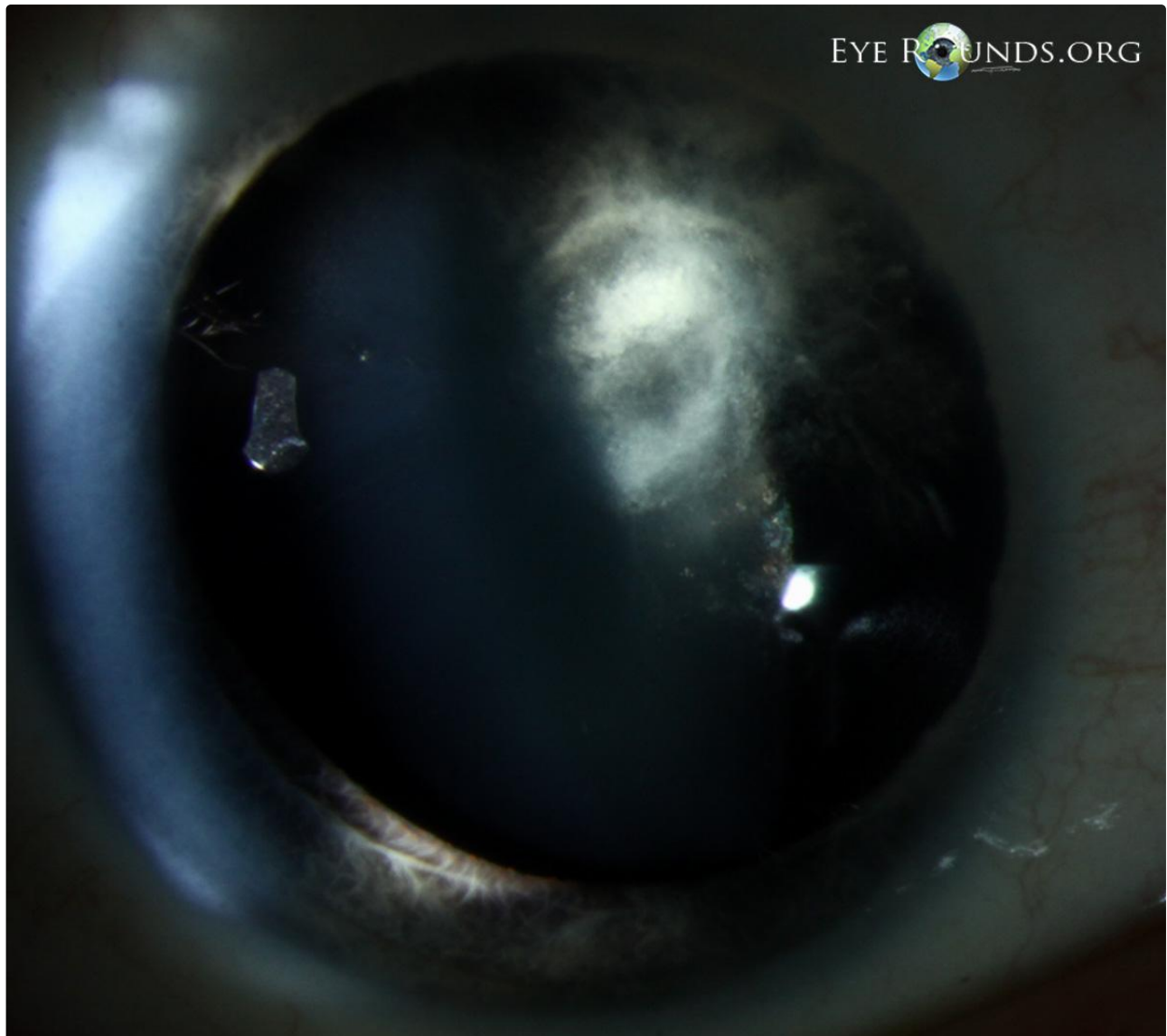
## Bilateral posterior polar cataracts

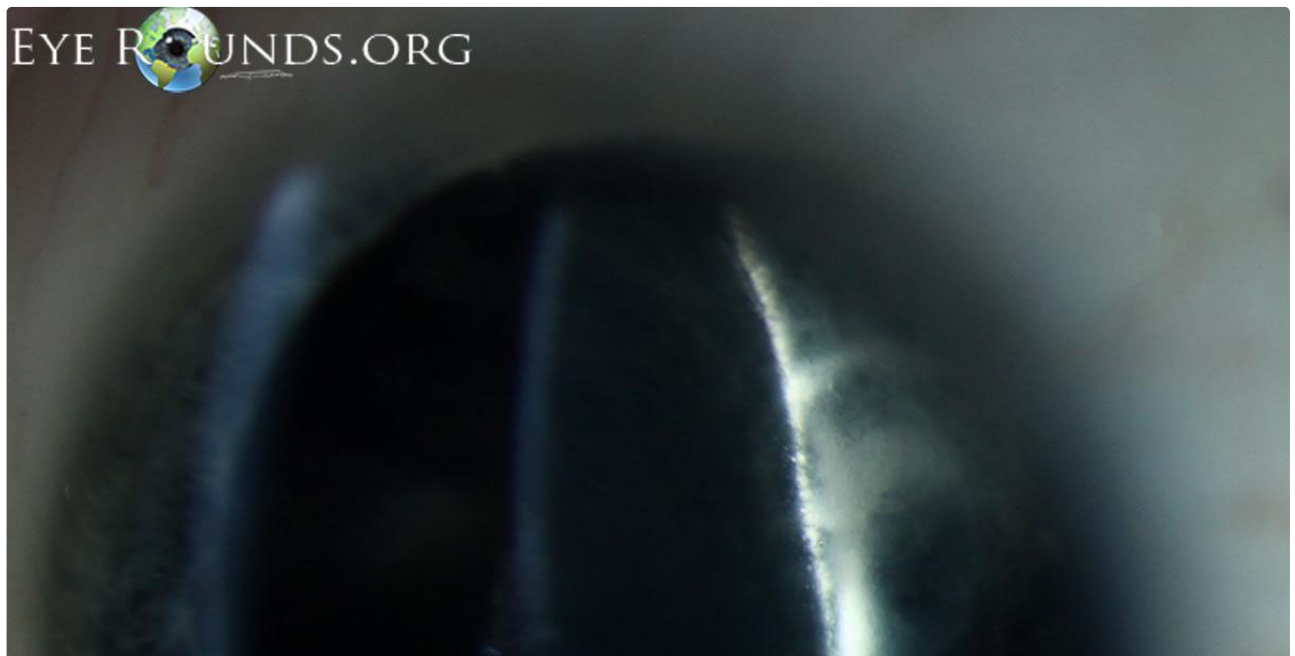
**Category(ies):** Cataract, Lens

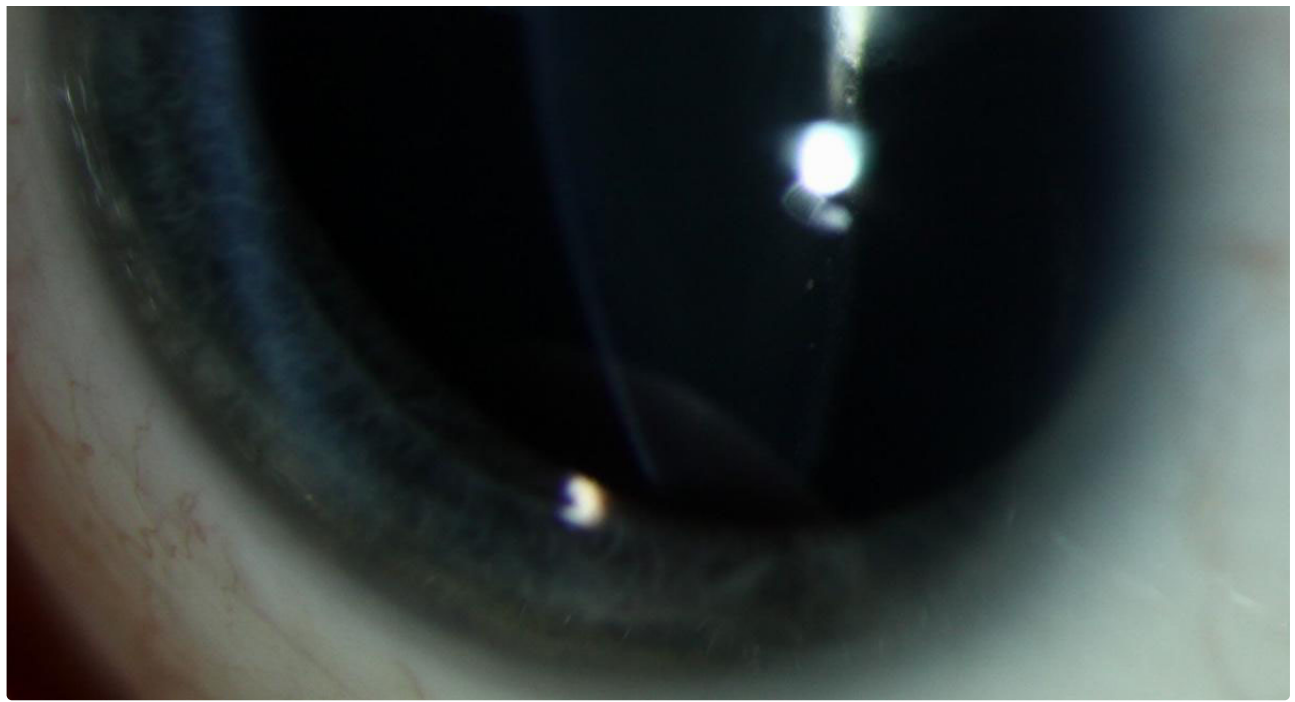
**Contributor:** Justin Risma, MD



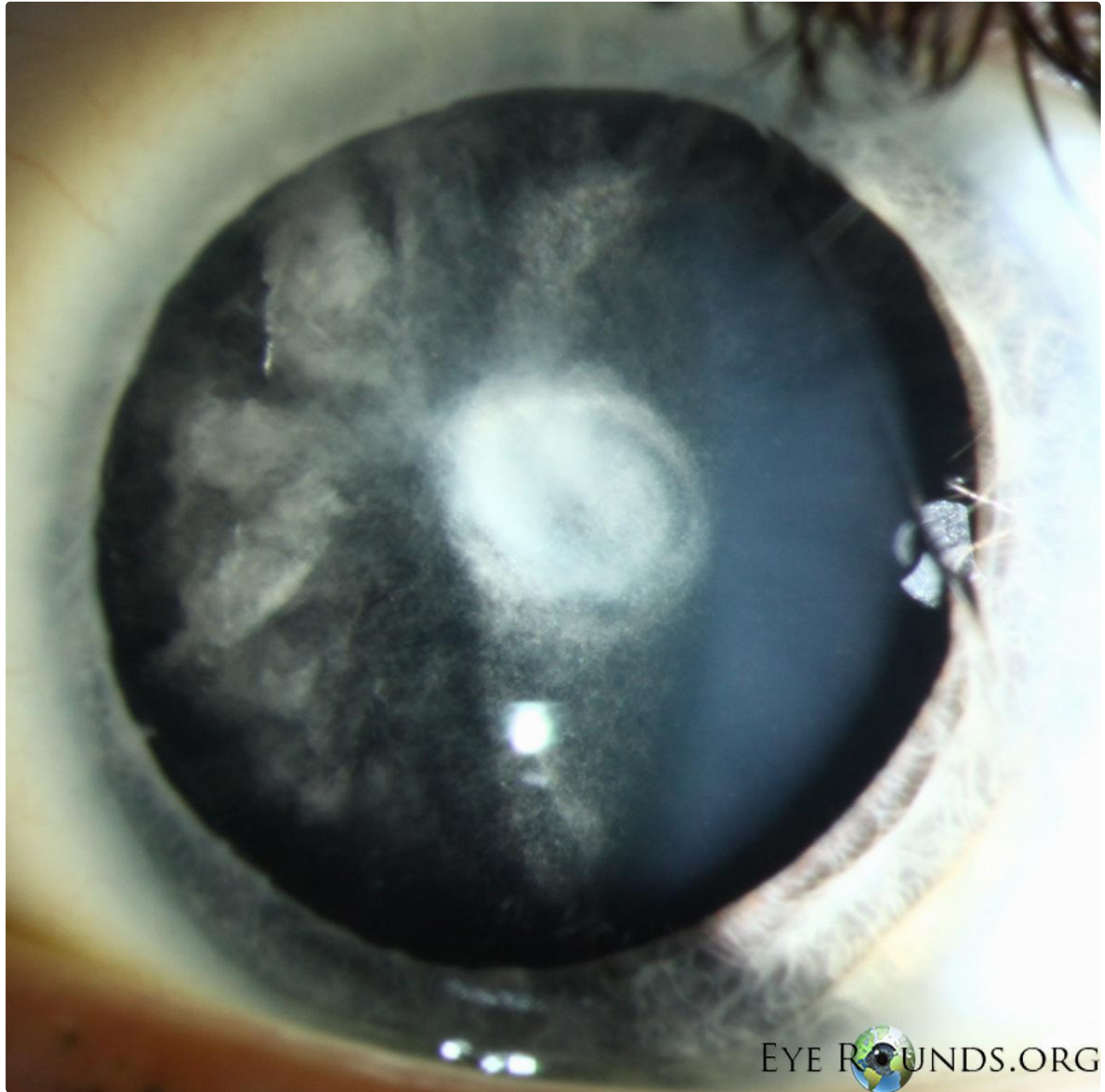
Posterior polar cataracts are lens opacities that involve the posterior subcapsular cortex and posterior capsule. They are important to recognize prior to cataract surgery because the posterior capsule may be weak or absent in that area, leading to an increased risk of surgical complications. To minimize this risk, surgeons should avoid hydrodissection or other maneuvers that place excessive pressure on the posterior capsule. Bilateral posterior polar cataracts are generally familial and inherited in an autosomal dominant fashion, while unilateral posterior polar cataracts are generally sporadic and may be associated with persistent fetal vasculature, lenticonus, or lentiglobus.





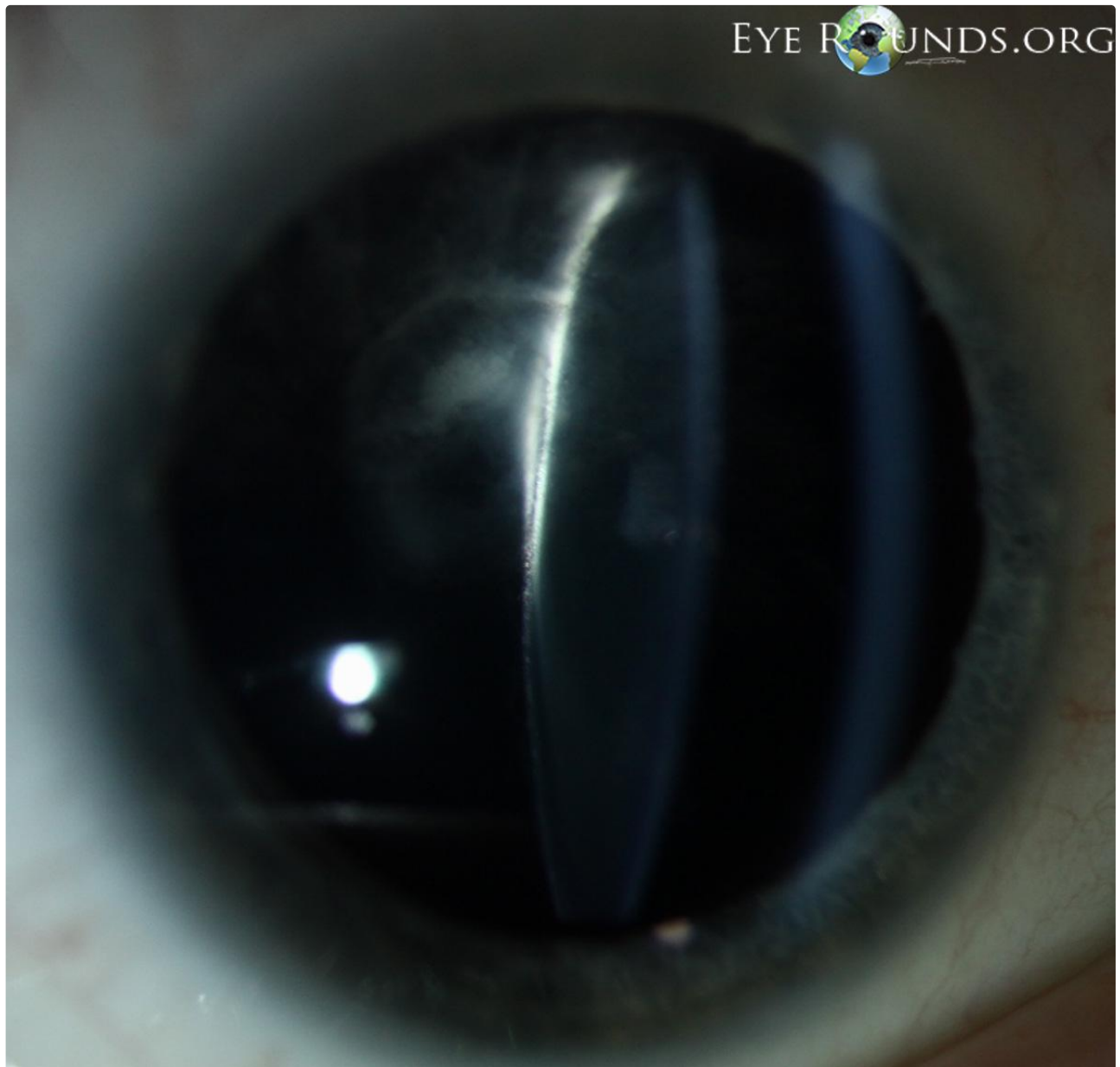


[🔍 Enlarge](#)   [📄 Download](#)



EYE ROUNDS.ORG

[🔍 Enlarge](#)   [📄 Download](#)



## References:

1. 2012-2013 Basic and Clinical Science Course (BCSC) Section 11: Lens and Cataract. San Francisco: American Academy of Ophthalmology; 2012.

## Image Permissions:



Ophthalmic Atlas Images by [EyeRounds.org](#), [The University of Iowa](#) are licensed under a [Creative Commons Attribution-NonCommercial-NoDerivs 3.0 Unported License](#).

## Address

University of Iowa  
Roy J. and Lucille A. Carver College  
of Medicine  
Department of Ophthalmology and  
Visual Sciences  
200 Hawkins Drive  
Iowa City, IA 52242

[Support Us](#)

## Legal

Copyright © 2019 The University of  
Iowa. All Rights Reserved  
[Report an issue with this page](#)  
[Web Privacy Policy](#) |  
[Nondiscrimination Statement](#)

## Related Links

[Cataract Surgery for Greenhorns](#)  
[EyeTransillumination](#)  
[Gonioscopy.org](#)  
[Iowa Glaucoma Curriculum](#)  
[Iowa Wet Lab](#)  
[Patient Information](#)  
[Stone Rounds](#)  
[The Best Hits Bookshelf](#)

## EyeRounds Social Media

Follow



Receive notification of new cases,  
[sign up here](#)  
[Contact Us](#)  
[Submit a Suggestion](#)