

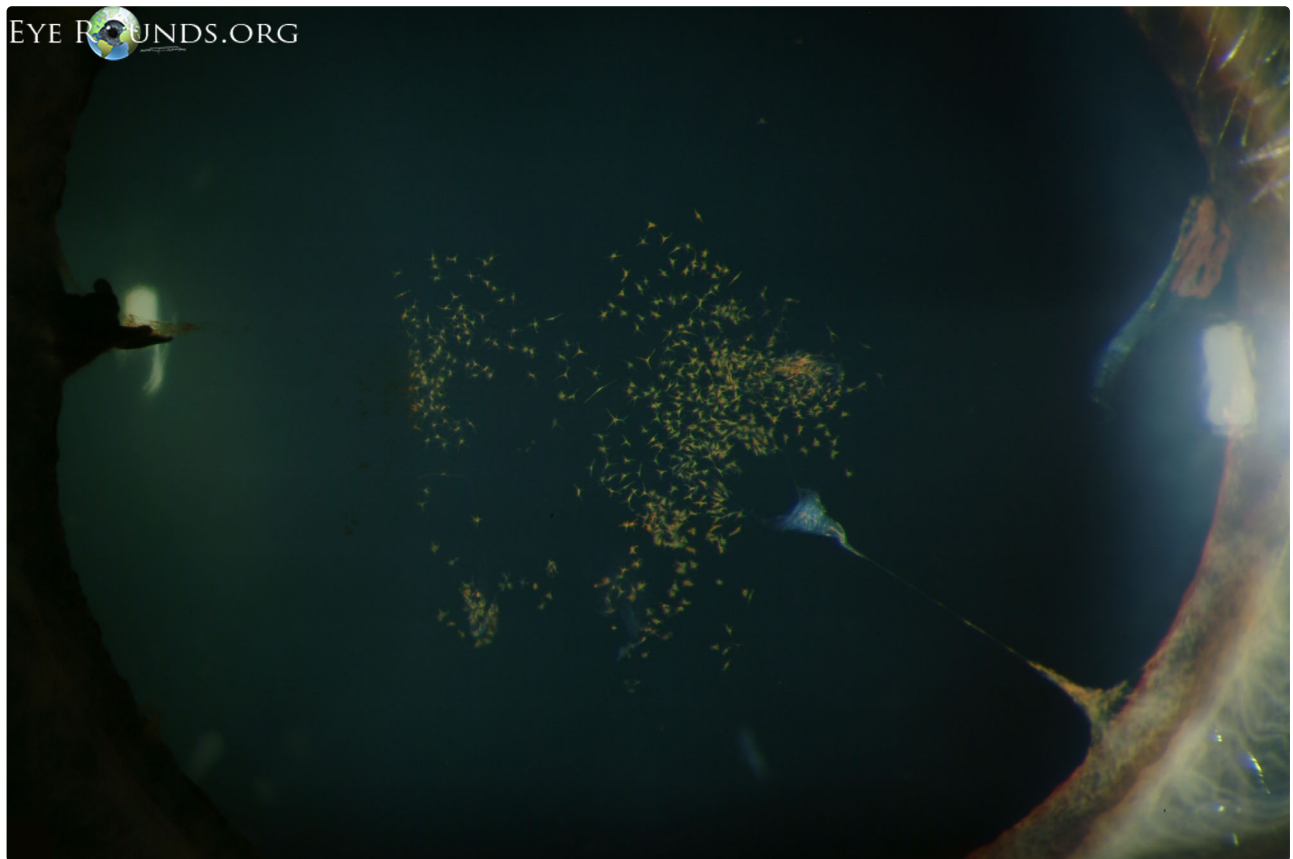
## Epicapsular stars and persistent pupillary membrane

**Category(ies):** [Cataract](#), [Lens](#)

**Contributor:** [Jesse Vislisel, MD](#)



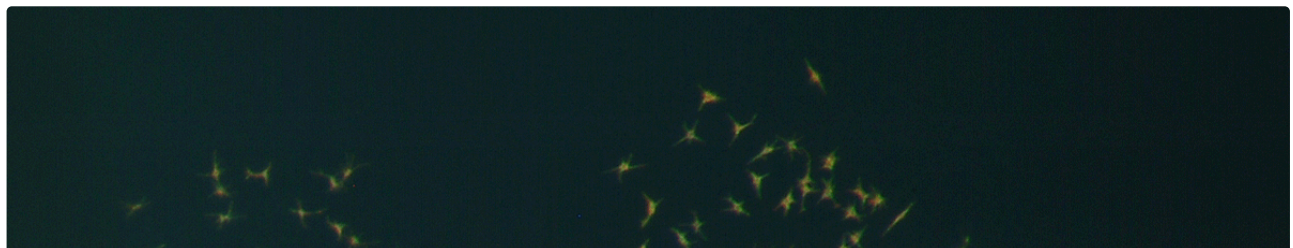
Epicapsular stars are tiny, stellate, pigmented opacities on the anterior lens capsule. Persistent pupillary membranes are fine iris strands extending across the pupil to other areas of iris (type I) or to the lens (type II) as seen in this photo. Both are remnants of the tunica vasculosa lentis, a vacular network that surrounds the lens during embryogenesis.

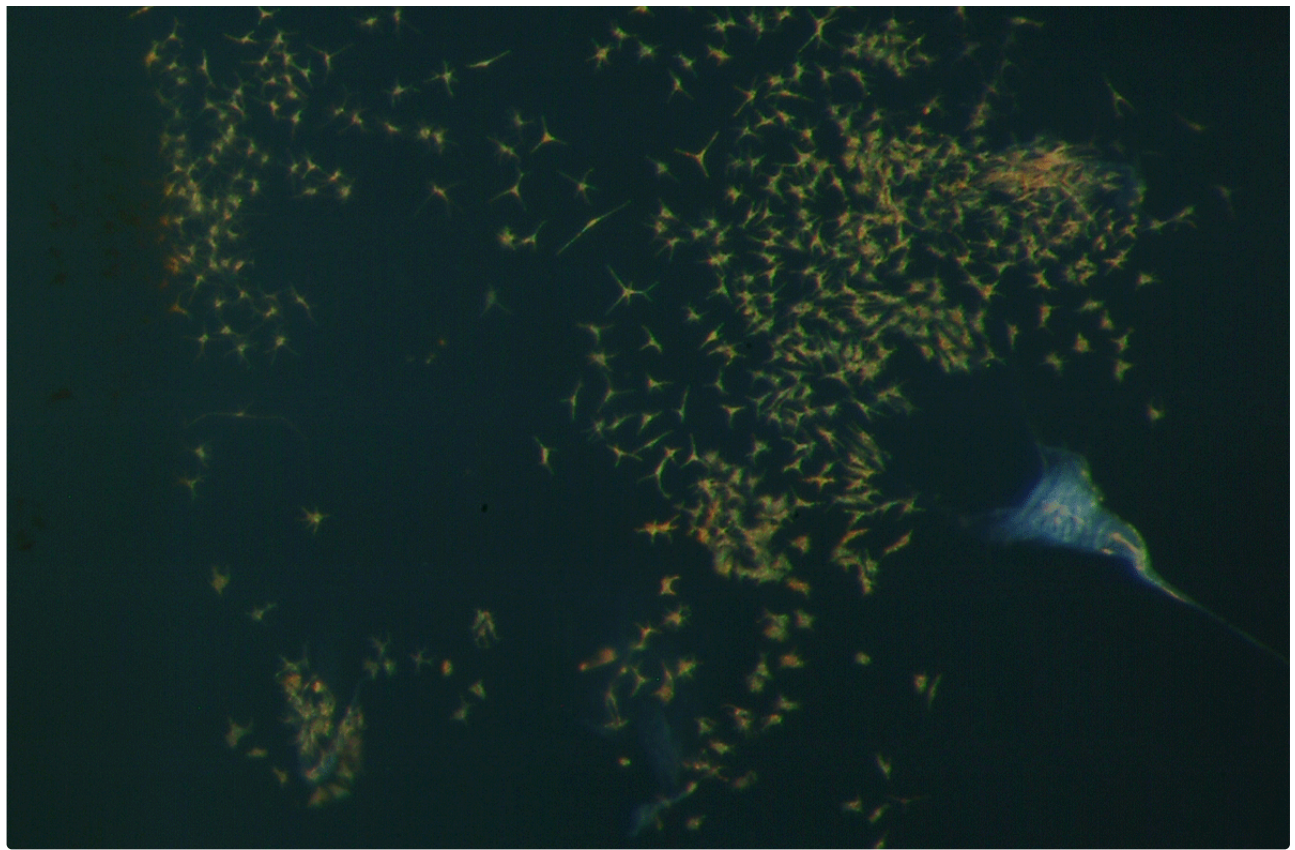


EYE ROUNDS.ORG

Epicapsular stars

[Enlarge](#) [Download](#)





Episcular stars (Close-up of stars)

[Enlarge](#) [Download](#)

### Image Permissions:



Ophthalmic Atlas Images by [EyeRounds.org](http://EyeRounds.org), [The University of Iowa](http://The University of Iowa) are licensed under a [Creative Commons Attribution-NonCommercial-NoDerivs 3.0 Unported License](https://creativecommons.org/licenses/by-nc-nd/3.0/).

### Address

University of Iowa  
Roy J. and Lucille A. Carver College  
of Medicine  
Department of Ophthalmology and  
Visual Sciences  
200 Hawkins Drive  
Iowa City, IA 52242

[Support Us](#)

### Legal

Copyright © 2019 The University of  
Iowa. All Rights Reserved  
[Report an issue with this page](#)  
[Web Privacy Policy](#) |  
[Nondiscrimination Statement](#)

### Related Links

[Cataract Surgery for Greenhorns](#)  
[EyeTransillumination](#)  
[Gonioscopy.org](#)  
[Iowa Glaucoma Curriculum](#)  
[Iowa Wet Lab](#)  
[Patient Information](#)  
[Stone Rounds](#)  
[The Best Hits Bookshelf](#)

### EyeRounds Social Media

Follow



Receive notification of new cases,  
sign up here  
[Contact Us](#)  
[Submit a Suggestion](#)