

## Iris Melanoma

Category(ies): Cornea, Glaucoma, Iris

Contributor: [David A. Ramirez, MD](#); [Mark A. Greiner, MD](#)

Photographers: Jody Troyer, CRA; Laura Fuhrmeister



93-year-old woman presented with progression of longstanding iris nevus. Her original presentation in 2005 is shown in Figure 1. Figures 2 and 3 demonstrate frank enlargement of the primary lesion at 6 o'clock and local metastasis, with erosion through the angle into the sclera at 8 o'clock (Figures 4 and 5). Pigmented keratic precipitates are suspicious for anterior chamber seeding (Figure 6). High frequency anterior segment imaging demonstrates further angle invasion (arc of high reflectivity; Figure 7).



Figure 1. Primary lesion presentation, 2005

[Enlarge](#) [Download](#)





Figure 2. Evolution of primary lesion, 2019

[Enlarge](#)

[Download](#)

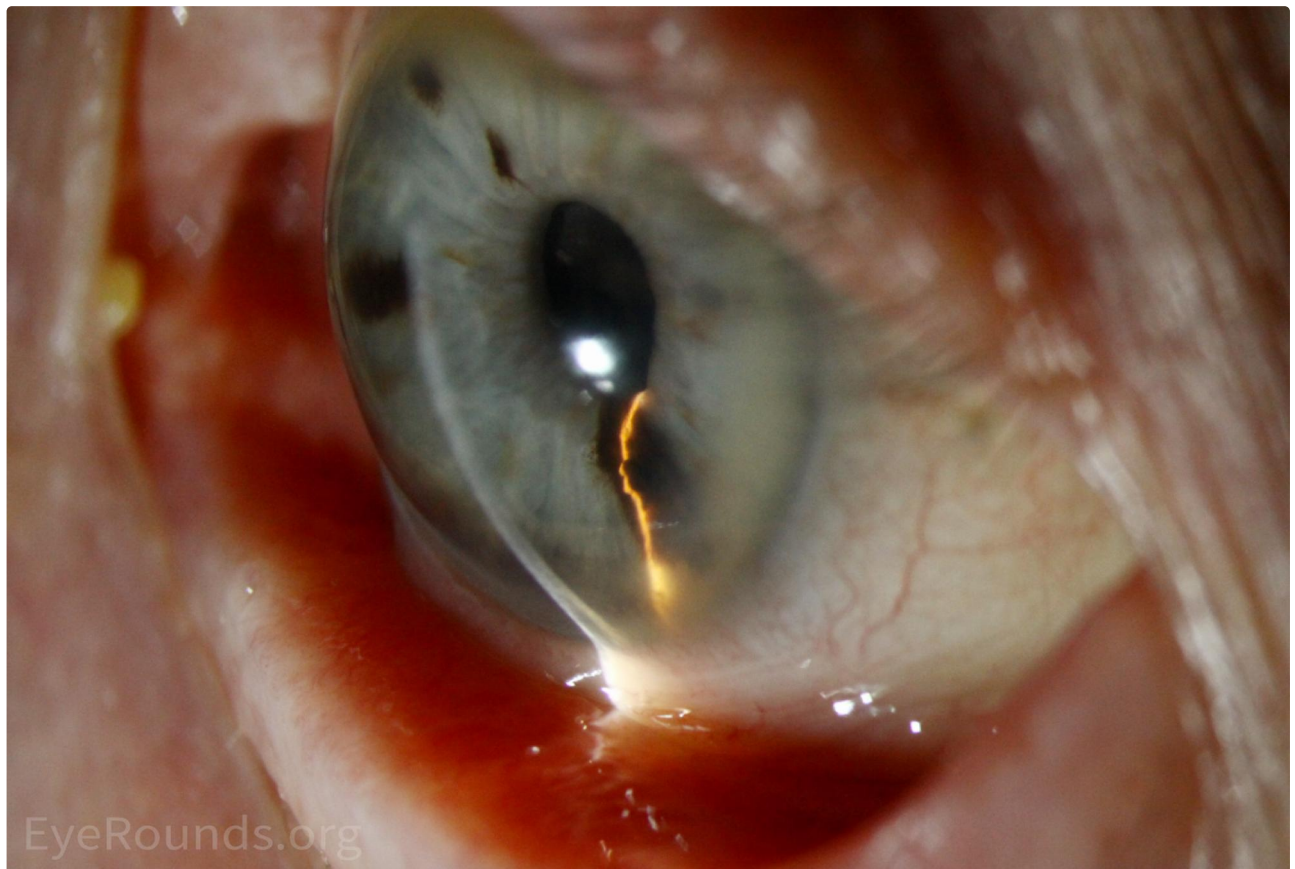


Figure 3. Elevation of the iris melanoma

[Enlarge](#)

[Download](#)



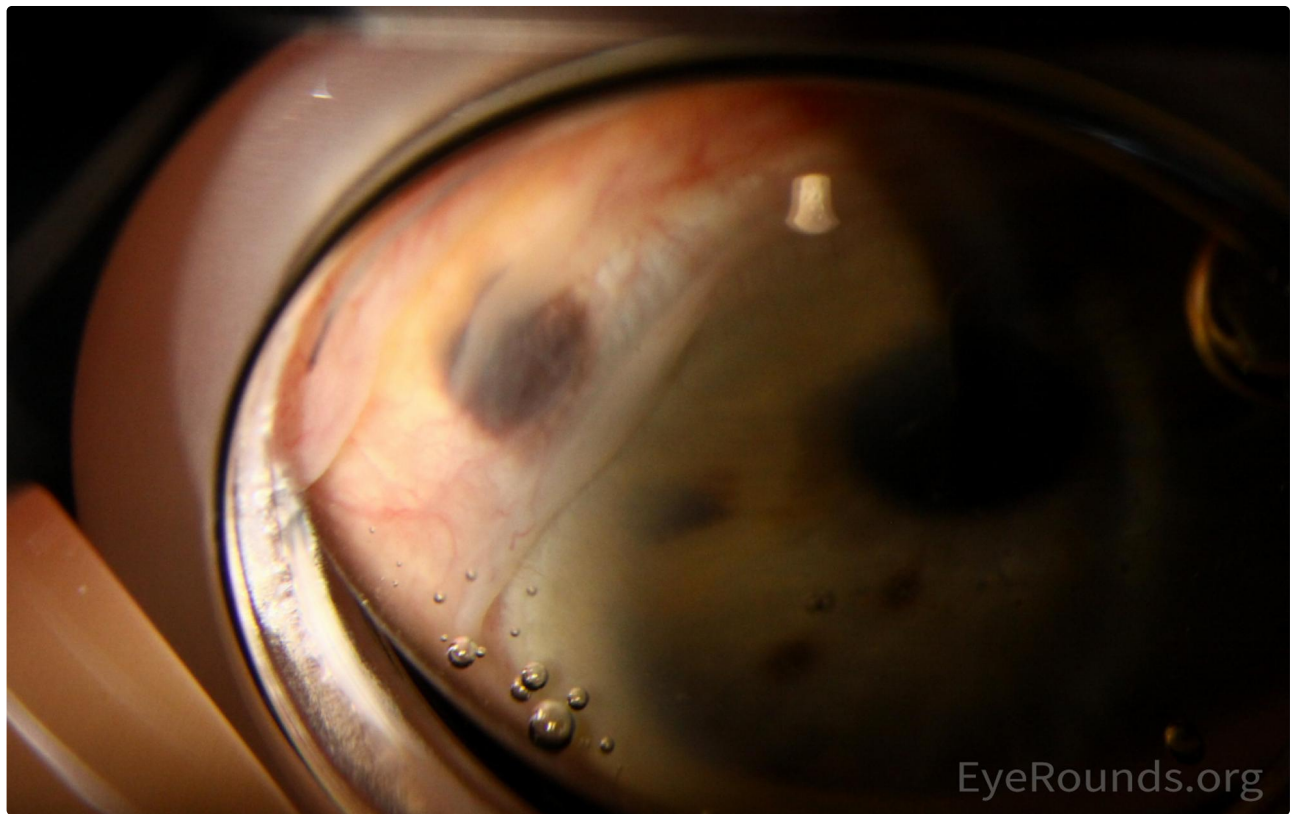


Figure 4. Invasion of the iris melanoma through the sclera, with overlying conjunctiva

[Enlarge](#) [Download](#)

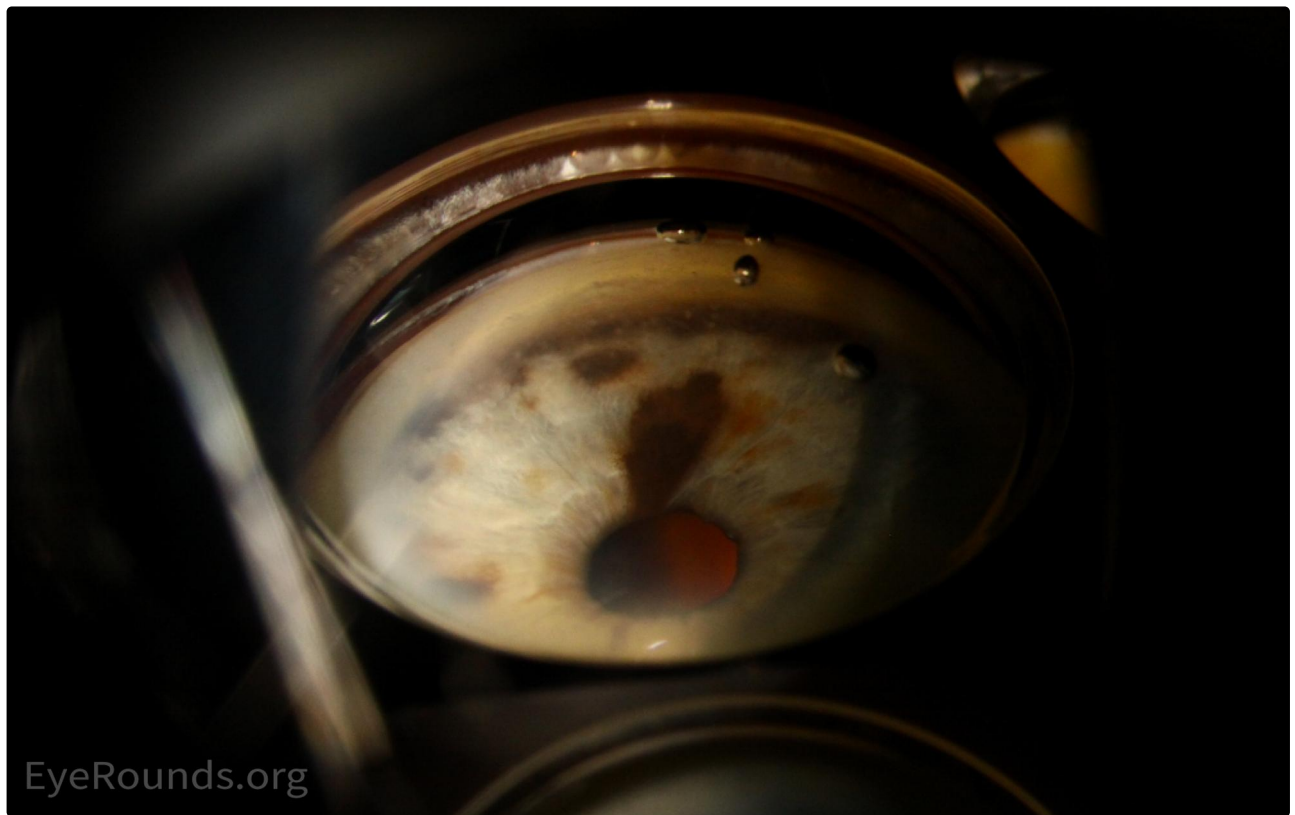


Figure 5. Dense pigmentary infiltration of the angle

[Enlarge](#) [Download](#)

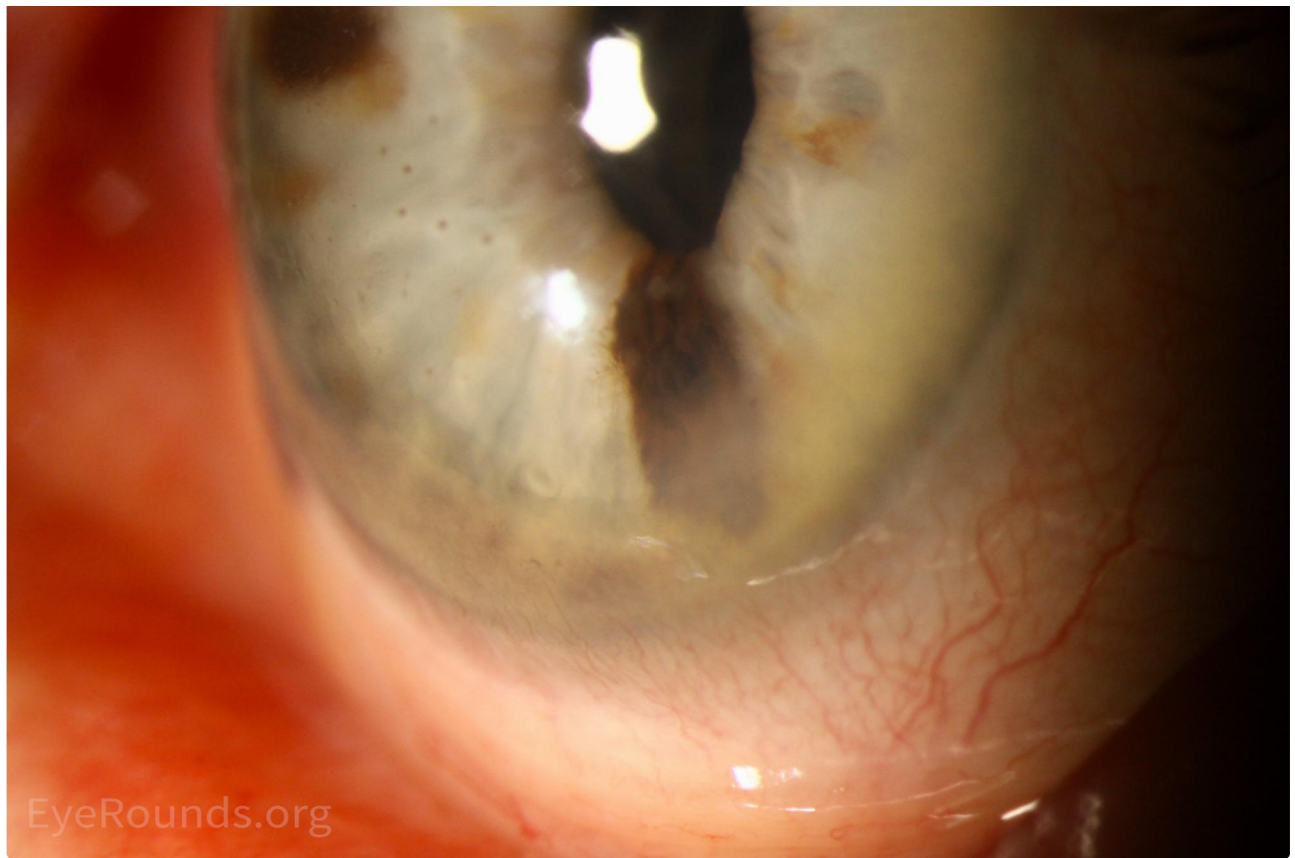


Figure 6. Pigmented keratic precipitates on the corneal endothelium, thought secondary to melanoma seeding the anterior chamber.

[Enlarge](#) [Download](#)

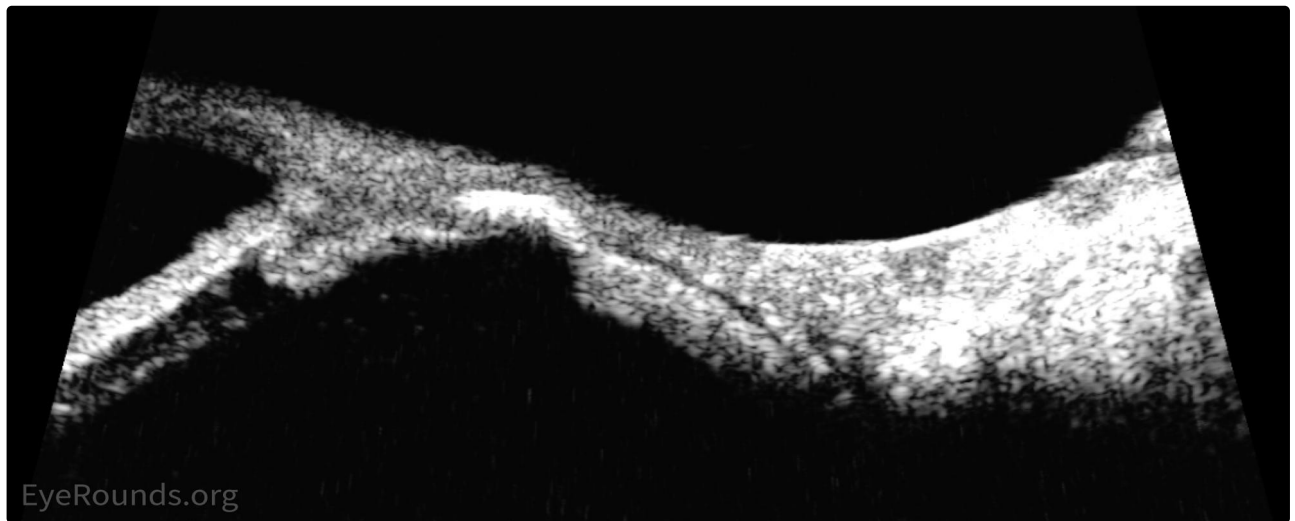


Figure 7. High frequency anterior segment ultrasonography showing high internal reflectivity, suspicious for malignancy, in the area of the lesion.

[Enlarge](#) [Download](#)

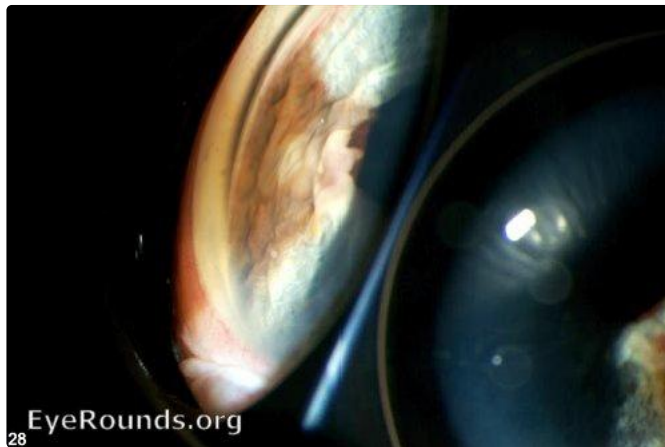
**Contributor:** [Andrew Doan, MD, PhD](#)

3 patients with iris melanomas. The last patient had a recurrence 20 years later after an iridocyclectomy.





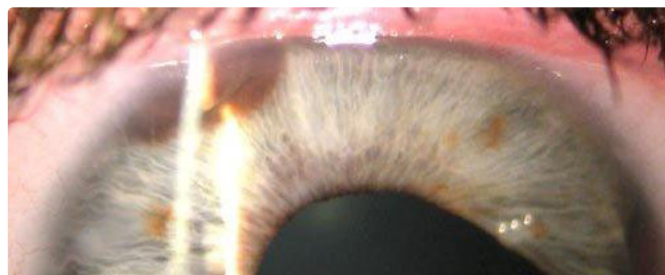
[Enlarge](#) [Download](#)



[Enlarge](#) [Download](#)



[Enlarge](#) [Download](#)







[Enlarge](#) [Download](#)

**Contributor:** [John Chen, MD, PhD](#)

**Photographer:** D. Brice Critser, CRA

81-year-old female with a slowly enlarging iris lesion found to be an iris melanoma originating from an iris nevus.



[Enlarge](#) [Download](#)





[Enlarge](#) [Download](#)

### Image Permissions:



Ophthalmic Atlas Images by [EyeRounds.org](#), [The University of Iowa](#) are licensed under a [Creative Commons Attribution-NonCommercial-NoDerivs 3.0 Unported License](#).

### Address

University of Iowa  
Roy J. and Lucille A. Carver College  
of Medicine  
Department of Ophthalmology and  
Visual Sciences  
200 Hawkins Drive  
Iowa City, IA 52242

[Support Us](#)

### Legal

Copyright © 2019 The University of  
Iowa. All Rights Reserved  
[Report an issue with this page](#)  
[Web Privacy Policy](#) |  
[Nondiscrimination Statement](#)

### Related Links

[Cataract Surgery for Greenhorns](#)  
[EyeTransillumination](#)  
[Gonioscopy.org](#)  
[Iowa Glaucoma Curriculum](#)  
[Iowa Wet Lab](#)  
[Patient Information](#)  
[Stone Rounds](#)  
[The Best Hits Bookshelf](#)

### EyeRounds Social Media

Follow



Receive notification of new cases,  
[sign up here](#)  
[Contact Us](#)  
[Submit a Suggestion](#)