

## Kayser-Fleischer Ring in Wilson's Disease

Category(ies): Cataract/Lens; Cornea; Glaucoma/Iris

Contributor: [Thomas J.E. Clark, MD](#)

Photographer: Brice Critser, CRA

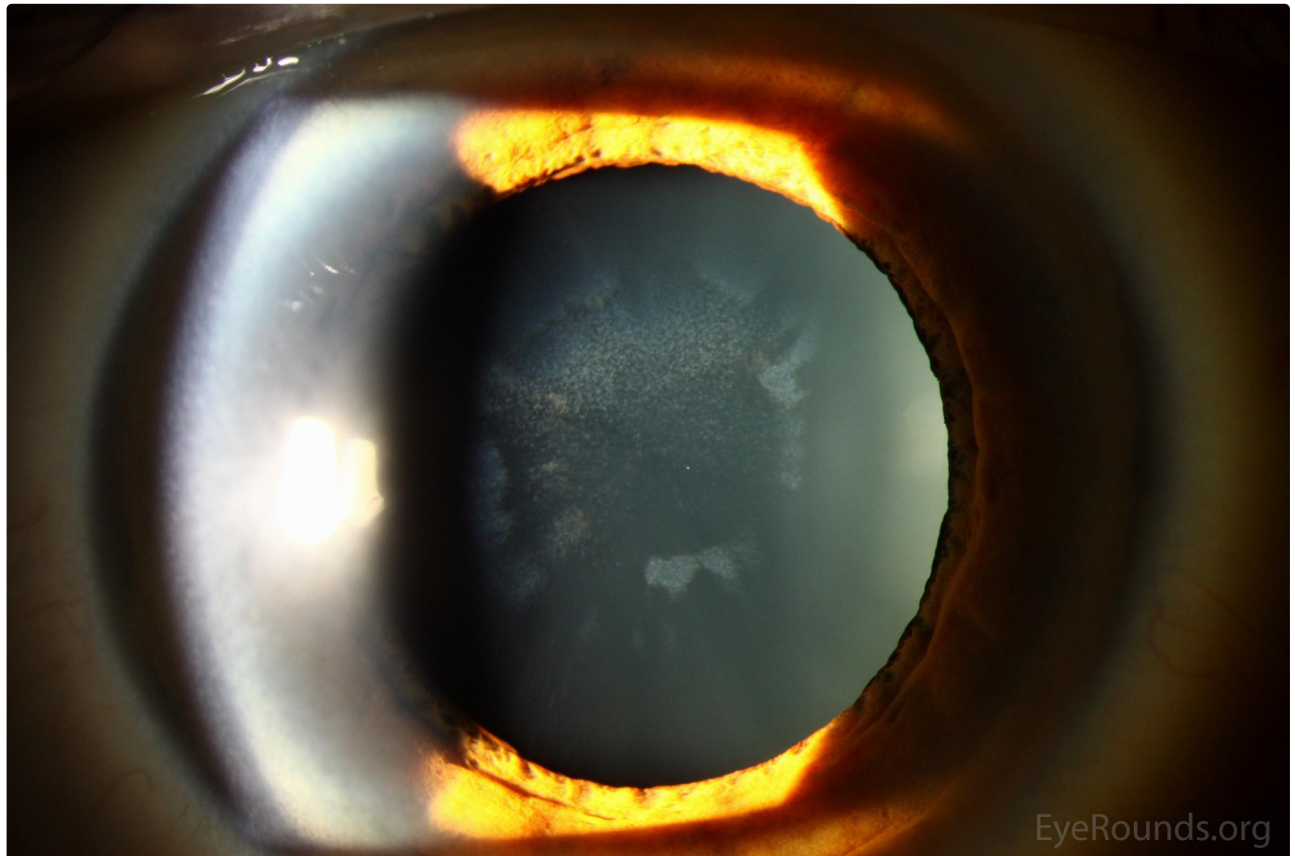
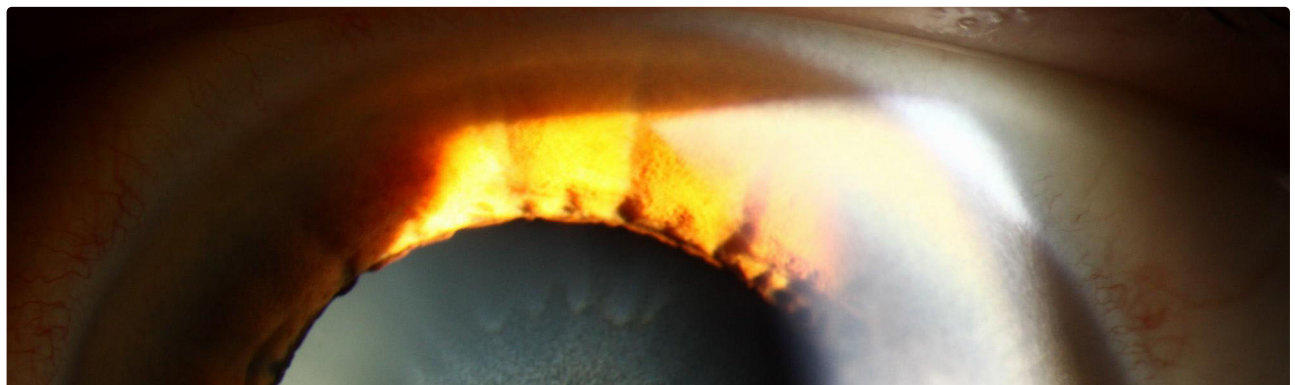


Figure 1a. Slit lamp photographs of sunflower cataracts of the right eye. Note the ring-shaped, anterior capsular opacities that resemble a "sunflower," a finding that is classically associated with Wilson's Disease.

[Enlarge](#) [Download](#)



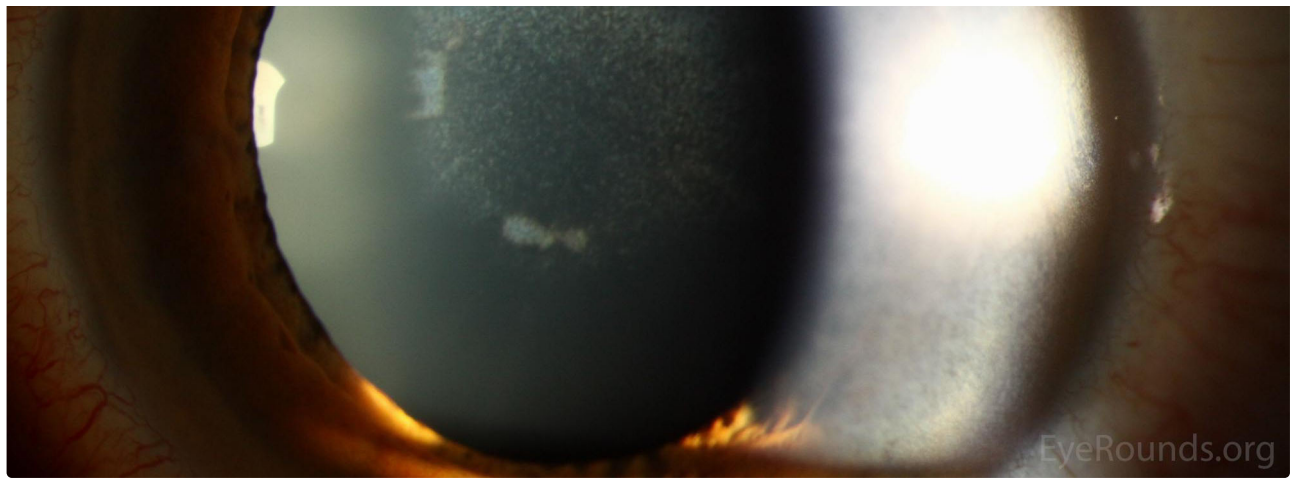


Figure 1b. Slit lamp photographs of sunflower cataracts of the left eye. Note the ring-shaped, anterior capsular opacities that resemble a "sunflower," a finding that is classically associated with Wilson's Disease.

[Enlarge](#) [Download](#)

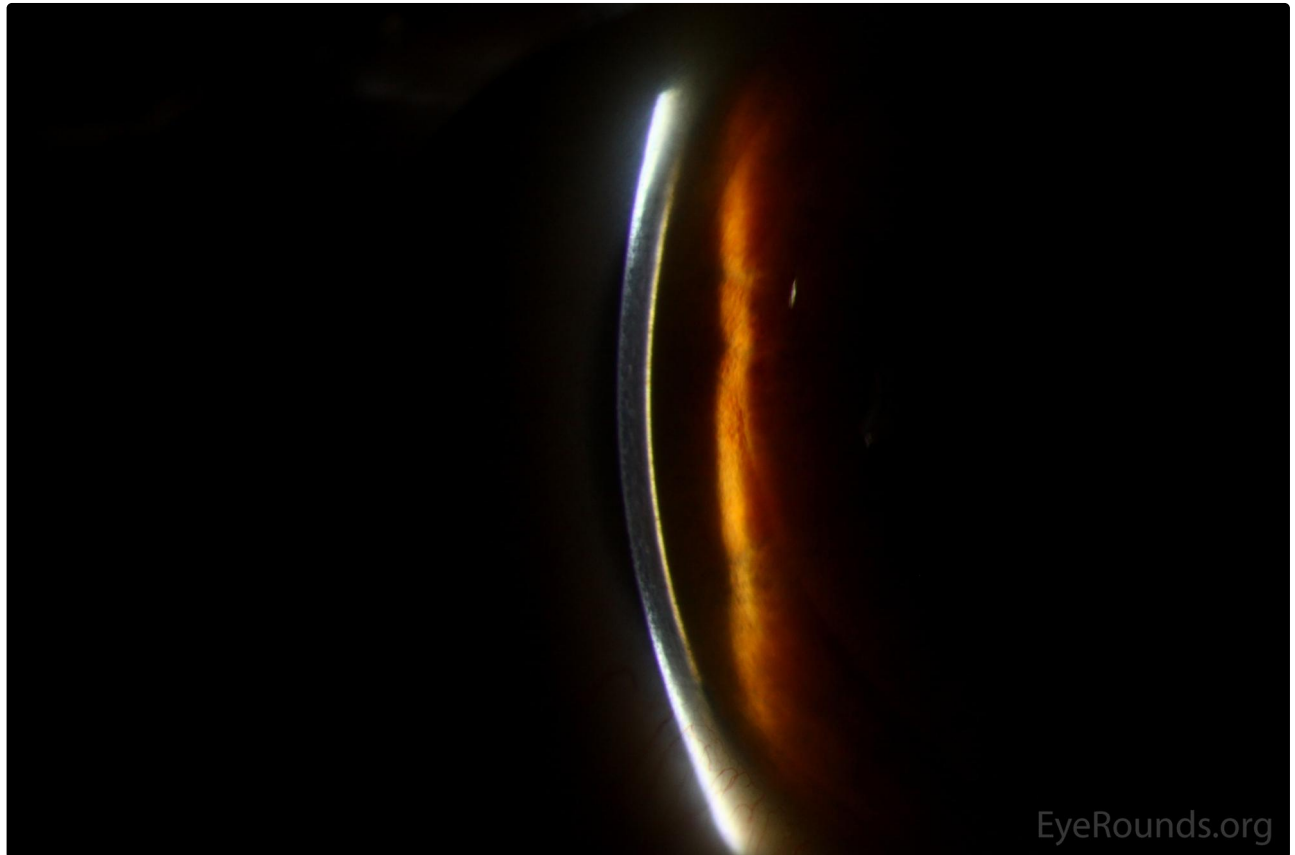
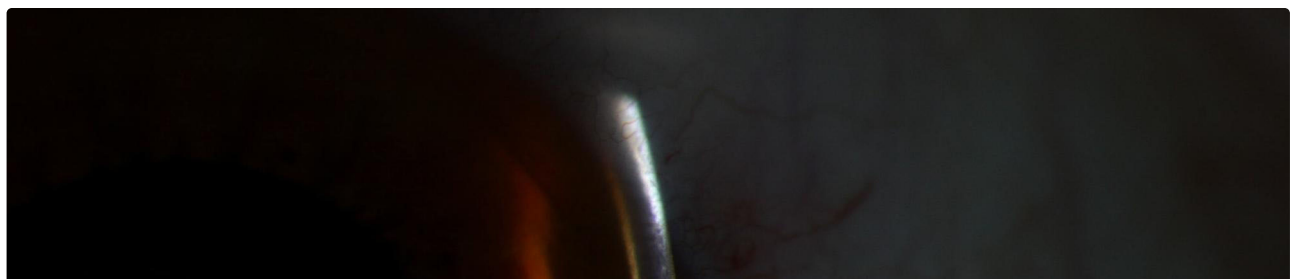


Figure 2a. Slit lamp photographs of a Kayser-Fleischer ring. Note the prominent golden/copper hue of the peripheral corneal endothelium—a result of copper deposition, primarily in Descemet membrane.

[Enlarge](#) [Download](#)



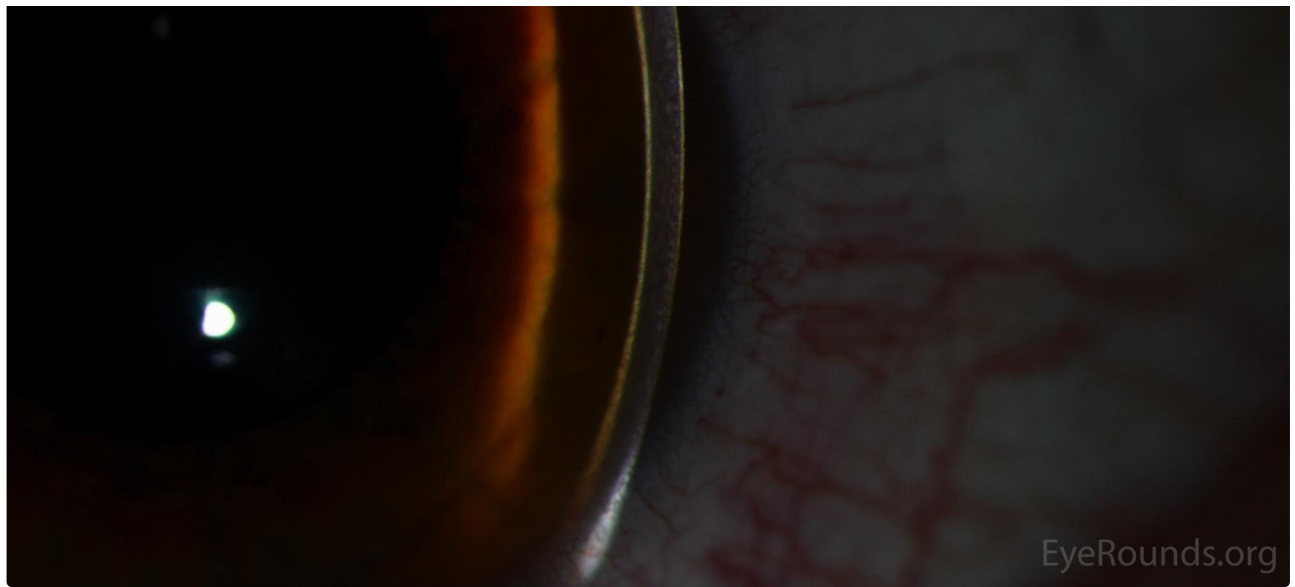


Figure 2b. Slit lamp photographs of a Kayser-Fleischer ring. Note the prominent golden/copper hue of the peripheral corneal endothelium—a result of copper deposition, primarily in Descemet membrane.

[Enlarge](#) [Download](#)

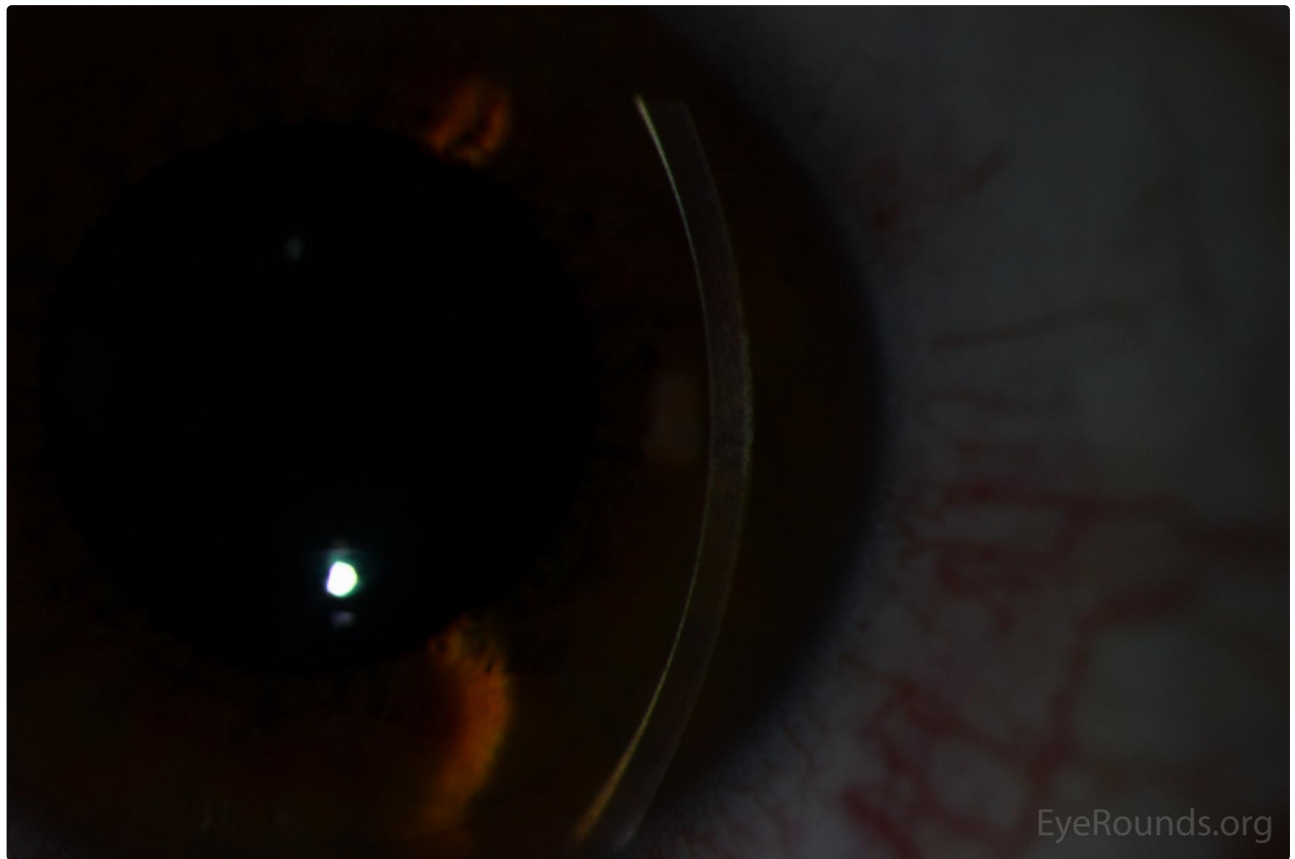
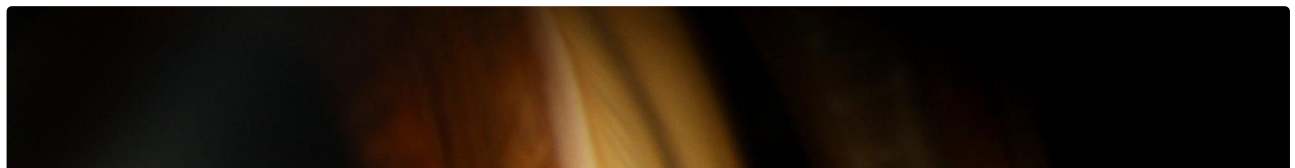


Figure 2c. Note how the posterior corneal reflex loses the prominent golden/copper hue centrally but maintains the dull metallic sheen superiorly and inferiorly (seen most prominently inferiorly in this photograph)

[Enlarge](#) [Download](#)



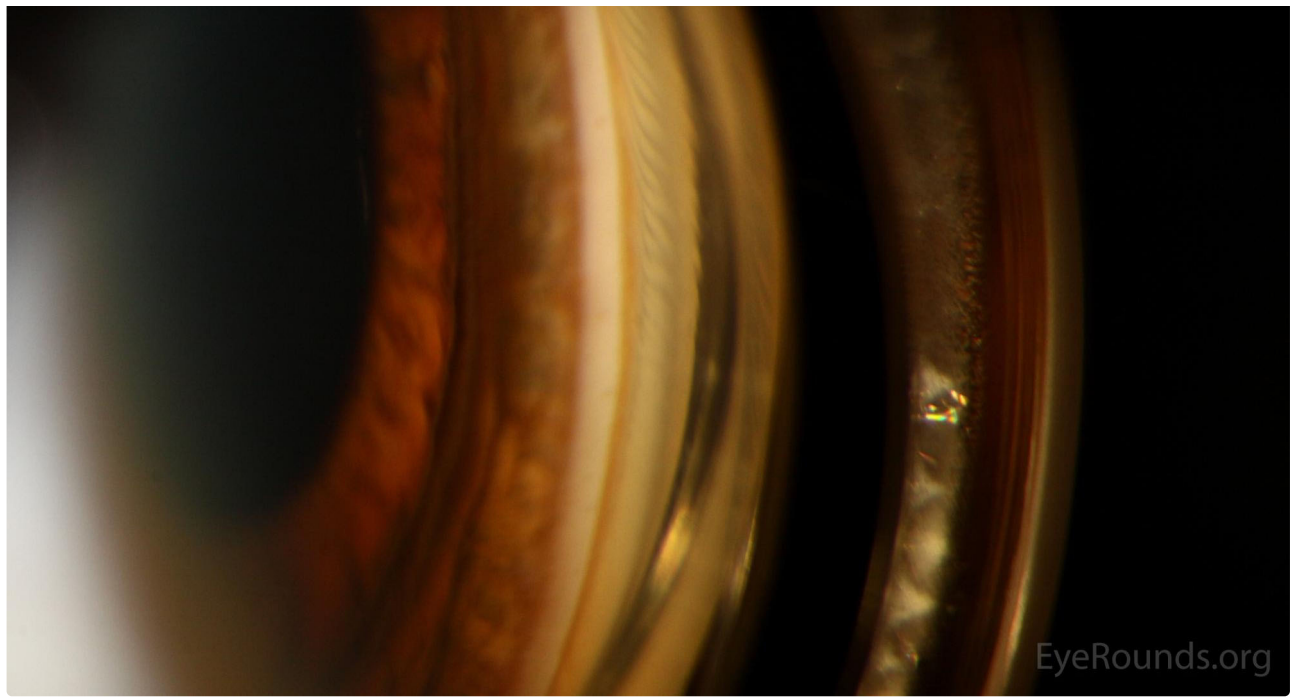


Figure 3. Slit lamp gonioscopy photographs of a Kayser-Fleischer ring. Note the dark brown/gold/copper band located anterior to the trabecular meshwork in the peripheral cornea.

[Enlarge](#) [Download](#)

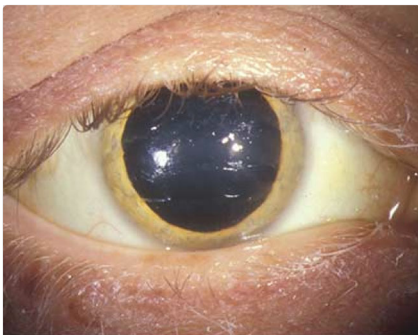
#### Image Permissions:



Ophthalmic Atlas Images by [EyeRounds.org](#), [The University of Iowa](#) are licensed under a [Creative Commons Attribution-NonCommercial-NoDerivs 3.0 Unported License](#).



#### Related Articles



[Related Case: Kayser-Fleischer Ring](#)

## Address

University of Iowa  
Roy J. and Lucille A. Carver College  
of Medicine  
Department of Ophthalmology and  
Visual Sciences  
200 Hawkins Drive  
Iowa City, IA 52242

[Support Us](#)

## Legal

Copyright © 2019 The University of  
Iowa. All Rights Reserved  
[Report an issue with this page](#)  
[Web Privacy Policy](#) |  
[Nondiscrimination Statement](#)

## Related Links

[Cataract Surgery for Greenhorns](#)  
[EyeTransillumination](#)  
[Gonioscopy.org](#)  
[Iowa Glaucoma Curriculum](#)  
[Iowa Wet Lab](#)  
[Patient Information](#)  
[Stone Rounds](#)  
[The Best Hits Bookshelf](#)

## EyeRounds Social Media

Follow



[Receive notification of new cases,  
sign up here](#)  
[Contact Us](#)  
[Submit a Suggestion](#)