

## Limbal stem cell deficiency

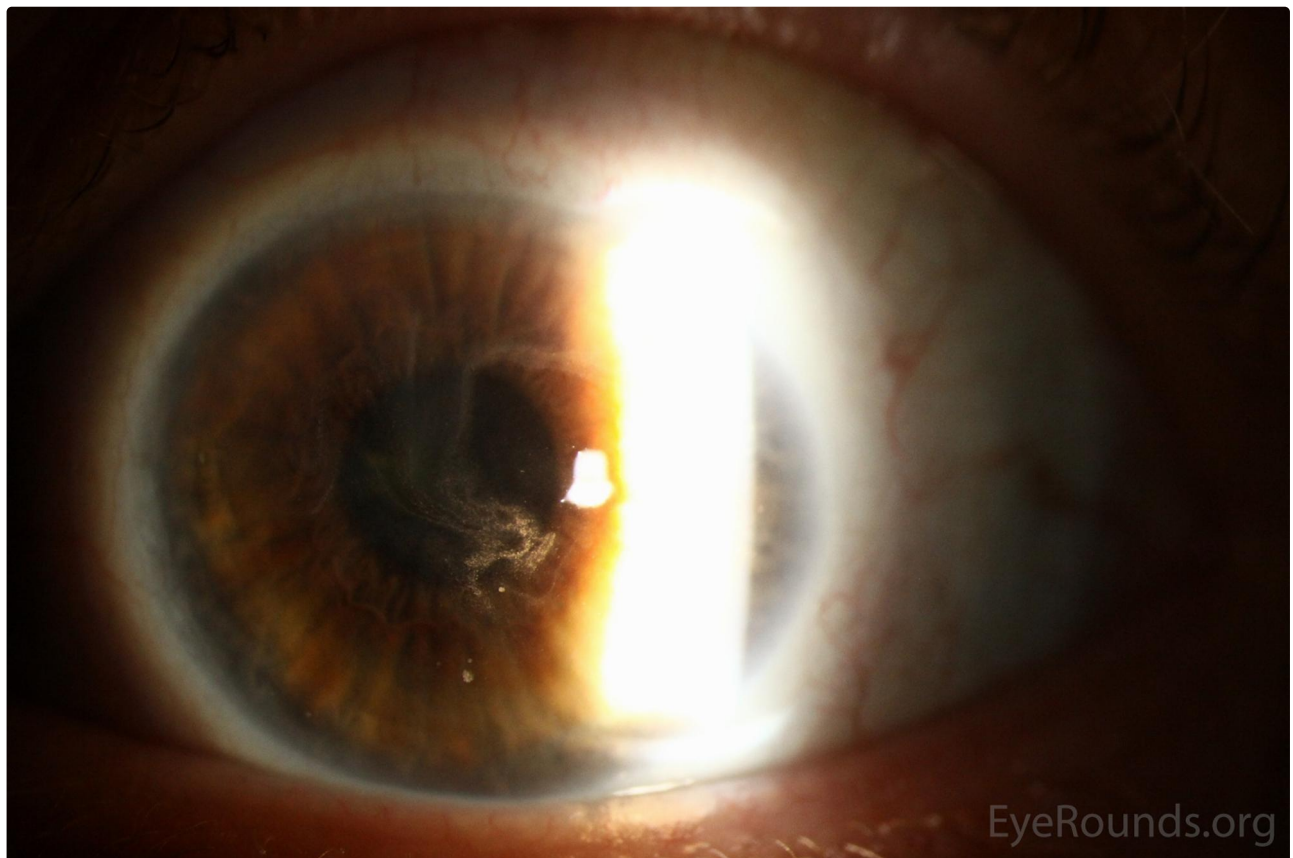
**Category(ies):** Cornea / External Eye Disease

**Contributor:** [Austin Fox, MD](#)

**Photographer:** Douglas Critser

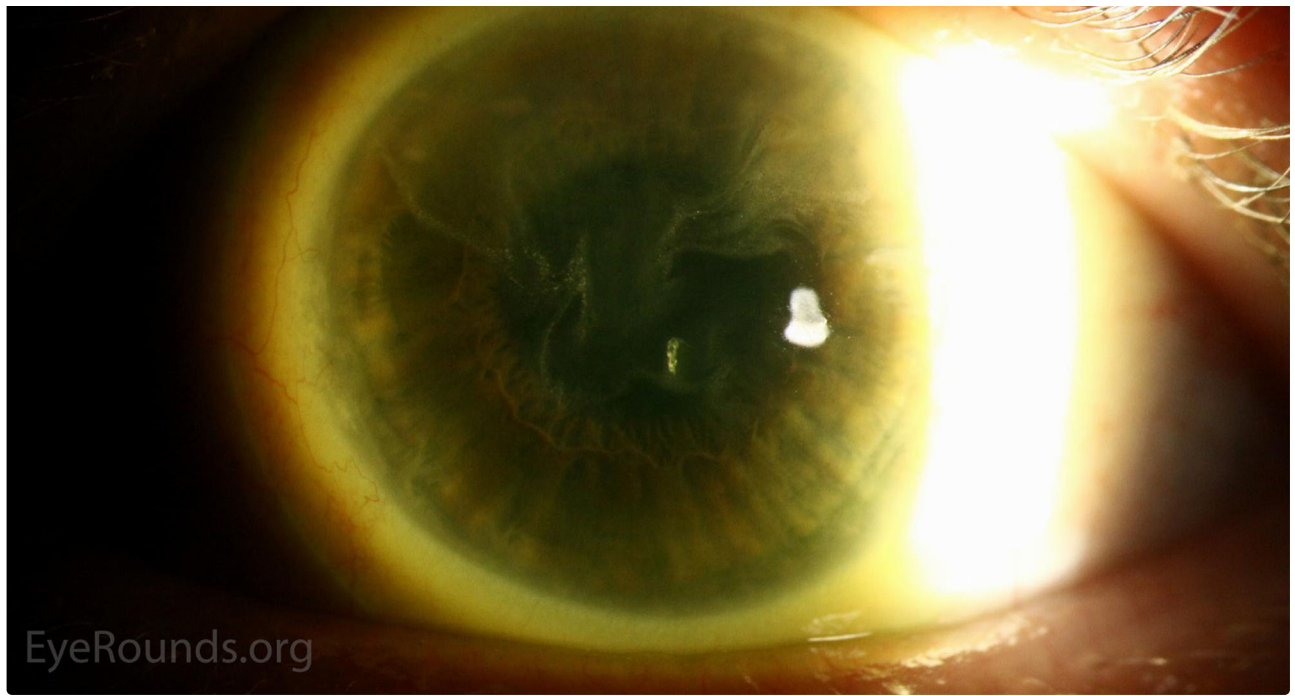


Limbal stem cell deficiency (LSCD) occurs when there is sufficient disturbance or destruction of the limbal stem cells of the corneal epithelium, resulting in disruption of the normal physiologic regenerative process and repopulation of corneal epithelium. Subsequently, LSCD may result in epithelial irregularities including erosions, ulcerations, neovascularization, and potentially conjunctivalization of the corneal surface in advanced cases. Classically, a "whorled" appearance of the corneal surface may be seen on exam, resulting from the centripetal extension of epithelium from the limbus as seen here extending from the superior limbus.



[Enlarge](#) [Download](#)





[Enlarge](#) [Download](#)

### References:

1. Schwartz GS, LoVerde L, Gomes J, Holland EJ. Cornea, 4th edition. 2017; Chapter 157: Classification and Staging of Ocular Surface Disease, p. 1668-1680.

### Image Permissions:



Ophthalmic Atlas Images by [EyeRounds.org](#), [The University of Iowa](#) are licensed under a [Creative Commons Attribution-NonCommercial-NoDerivs 3.0 Unported License](#).

### Address

University of Iowa  
Roy J. and Lucille A. Carver College  
of Medicine  
Department of Ophthalmology and  
Visual Sciences  
200 Hawkins Drive  
Iowa City, IA 52242

[Support Us](#)

### Legal

Copyright © 2019 The University of  
Iowa. All Rights Reserved  
[Report an issue with this page](#)  
[Web Privacy Policy](#) |  
[Nondiscrimination Statement](#)

### Related Links

[Cataract Surgery for Greenhorns](#)  
[EyeTransillumination](#)  
[Gonioscopy.org](#)  
[Iowa Glaucoma Curriculum](#)  
[Iowa Wet Lab](#)  
[Patient Information](#)  
[Stone Rounds](#)  
[The Best Hits Bookshelf](#)

### EyeRounds Social Media

Follow



Receive notification of new cases,  
[sign up here](#)  
[Contact Us](#)  
[Submit a Suggestion](#)