

## Mittendorf dot

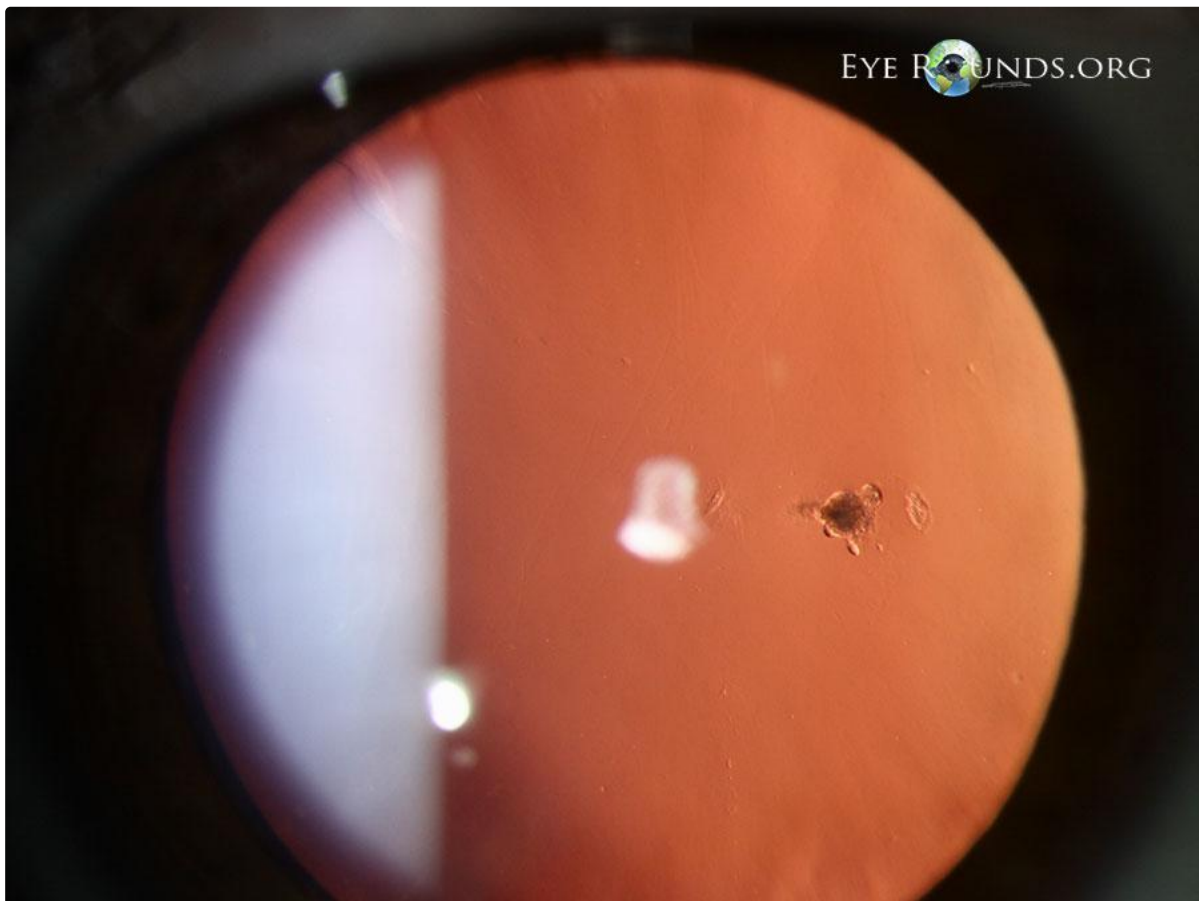
**Category(ies):** [Cataract](#), [Lens](#)

**Contributor:** [Matt Weed, MD](#)

**Photographer:** [D. Brice Critser, CRA](#)



A Mittendorf dot is a small, circular opacity on the posterior lens capsule, classically nasal in location, which represents the anterior attachment of the hyaloid artery. The hyaloid artery is present during gestation and typically regresses completely. Failure to do so can lead to benign findings, such as a Mittendorf dot or a Bergmeister's papilla, or pathologic changes as seen in persistent fetal vasculature syndrome.



[Enlarge](#) [Download](#)

Image Permissions:



## Address

University of Iowa  
Roy J. and Lucille A. Carver College  
of Medicine  
Department of Ophthalmology and  
Visual Sciences  
200 Hawkins Drive  
Iowa City, IA 52242

[Support Us](#)

## Legal

Copyright © 2019 The University of  
Iowa. All Rights Reserved  
[Report an issue with this page](#)  
[Web Privacy Policy](#) |  
[Nondiscrimination Statement](#)

## Related Links

[Cataract Surgery for Greenhorns](#)  
[EyeTransillumination](#)  
[Gonioscopy.org](#)  
[Iowa Glaucoma Curriculum](#)  
[Iowa Wet Lab](#)  
[Patient Information](#)  
[Stone Rounds](#)  
[The Best Hits Bookshelf](#)

## EyeRounds Social Media

Follow



Receive notification of new cases,  
[sign up here](#)  
[Contact Us](#)  
[Submit a Suggestion](#)