

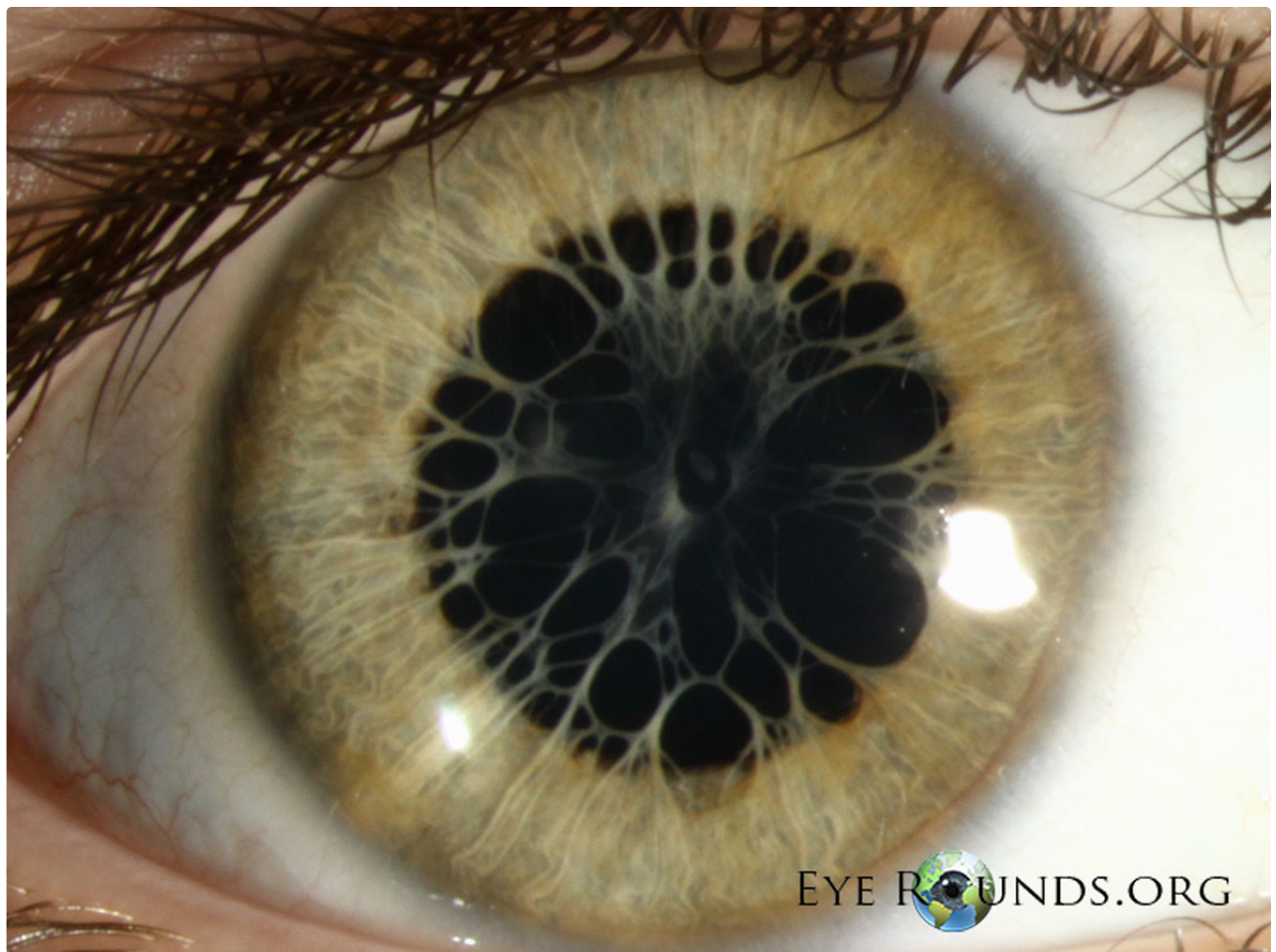
Persistent pupillary membrane

Category(ies): Pediatrics, Cataract, Iris, Lens

Contributor: [Jesse Vislisel, MD](#)

Photographer: Brice Critser, CRA

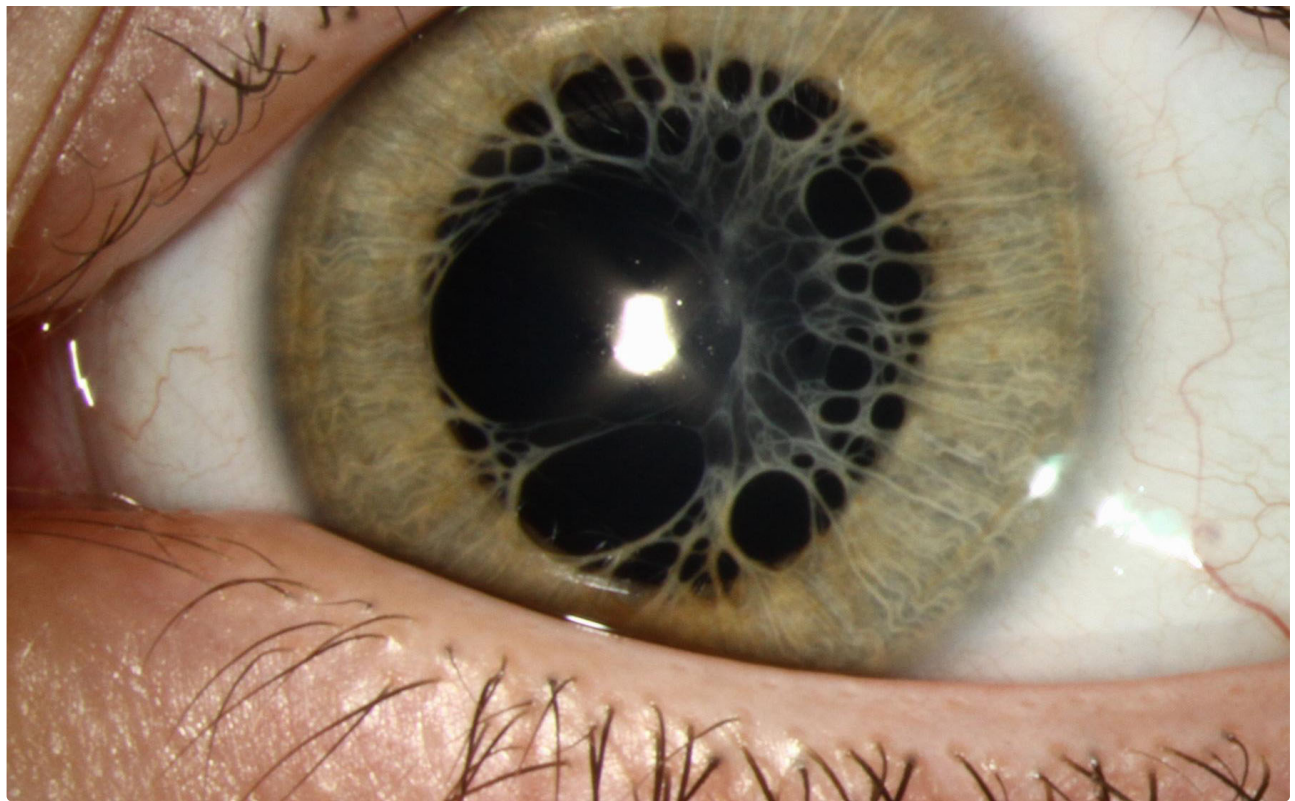
Persistent pupillary membranes are the result of remnants of the tunica vasculosa lentis, a vascular network that surround the lens during embryogenesis. They can vary in presentation from a few fine iris strands bridging the pupil to intricate webs with attachments to the lens.



Intricate webs with attachments to the lens

[Enlarge](#) [Download](#)





The patient's other eye.

[Enlarge](#)

[Download](#)

Image Permissions:



Ophthalmic Atlas Images by EyeRounds.org, The University of Iowa are licensed under a [Creative Commons Attribution-NonCommercial-NoDerivs 3.0 Unported License](https://creativecommons.org/licenses/by-nc-nd/3.0/).



Related Articles



[Related Atals Entry: Persistent Pupillary Membrane](#)

Address

University of Iowa
Roy J. and Lucille A. Carver College
of Medicine
Department of Ophthalmology and
Visual Sciences
200 Hawkins Drive
Iowa City, IA 52242

[Support Us](#)

Legal

Copyright © 2019 The University of
Iowa. All Rights Reserved
[Report an issue with this page](#)
[Web Privacy Policy](#) |
[Nondiscrimination Statement](#)

Related Links

[Cataract Surgery for Greenhorns](#)
[EyeTransillumination](#)
[Gonioscopy.org](#)
[Iowa Glaucoma Curriculum](#)
[Iowa Wet Lab](#)
[Patient Information](#)
[Stone Rounds](#)
[The Best Hits Bookshelf](#)

EyeRounds Social Media

Follow



[Receive notification of new cases,
sign up here](#)
[Contact Us](#)
[Submit a Suggestion](#)