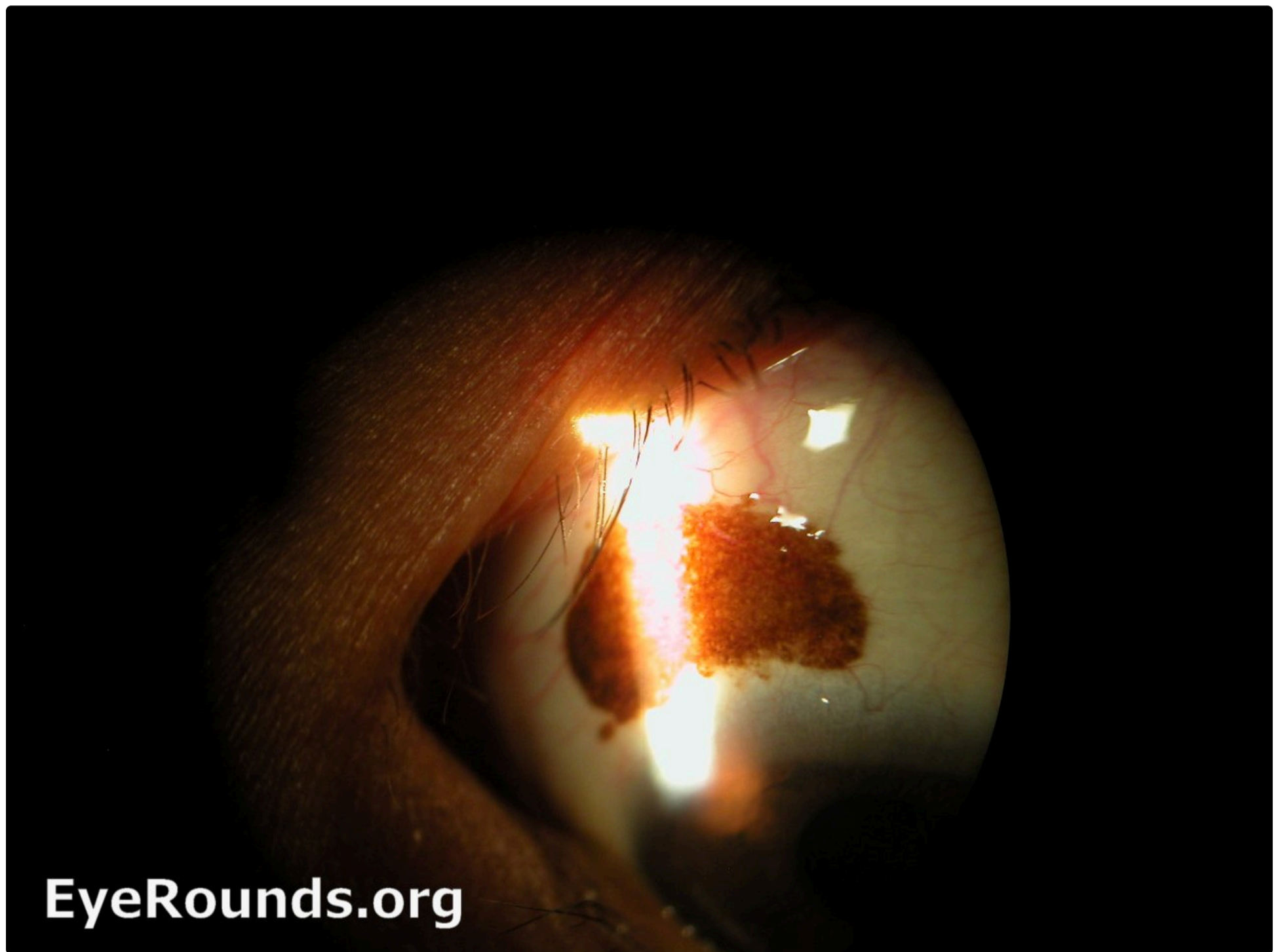


Pigmented Conjunctival Nevus

Category(ies): [Cornea](#), [External Disease](#)

Contributor: [Dr Rajan Paul](#)



[Enlarge](#) [Download](#)

Conjunctival nevus occurring in childhood.

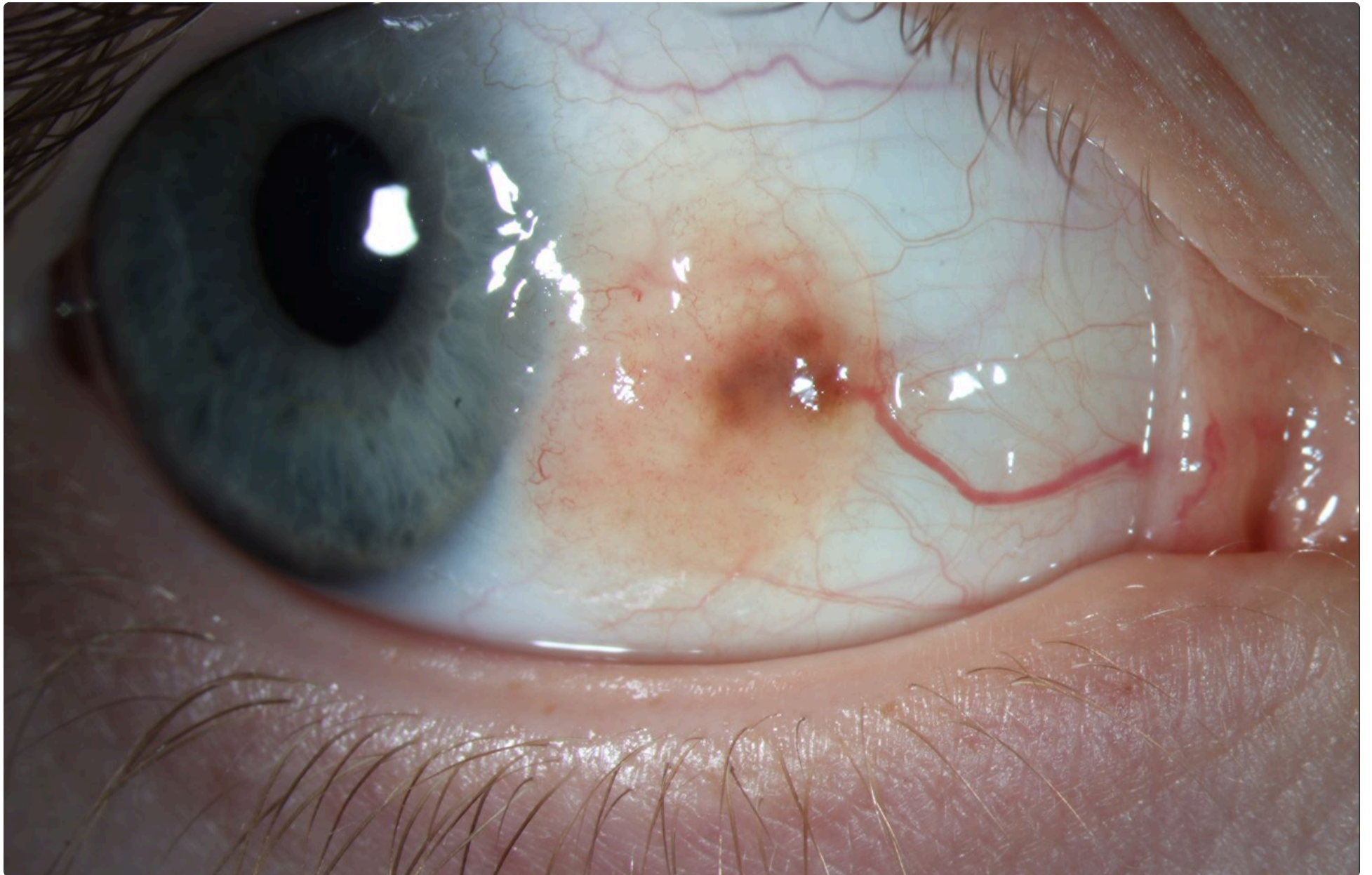
Category(ies): [Cornea](#) / [External Eye Disease](#)

Contributor: [Ella J. Gehrke, MD](#); [Kanwal Singh Matharu, MD](#); [Pavlina Kemp, MD](#)

Photographer: [Michael T. Edrington, CRA](#)

Posted: 03/03/2025

10-year-old female presented with a conjunctival lesion at the nasal limbus of her right eye (OD). The lesion measured approximately 1 cm × 6.5 mm, with notable elevation and a melanotic core. The lesion had been slowly enlarging over six years. Her visual acuity was 20/20 in both eyes (OU), with no reported diplopia, and intraocular pressures were within normal limits. Surgical excision was performed, and histopathology confirmed a juvenile compound nevus.



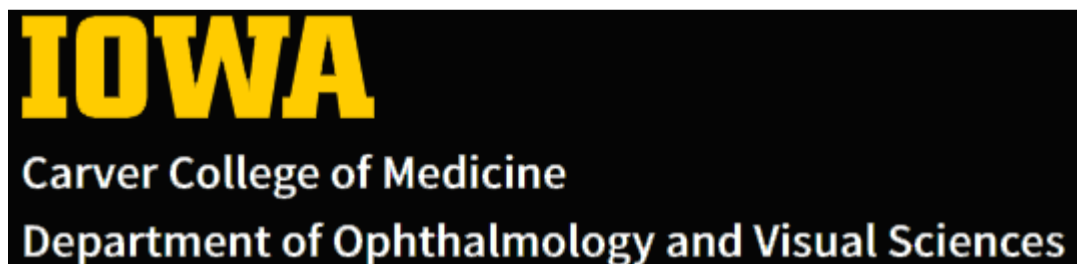
Elevated, regularly shaped, conjunctival lesion measuring 1 cm × 6.5 mm, with a melanotic core and a large central vessel, located at the nasal limbus of the right eye.

[Enlarge](#) [Download](#)

Image Permissions:



Ophthalmic Atlas Images by [EyeRounds.org](https://www.eyerounds.org), [The University of Iowa](https://www.theuniversityofiowa.edu) are licensed under a [Creative Commons Attribution-NonCommercial-NoDerivs 3.0 Unported License](https://creativecommons.org/licenses/by-nc-nd/3.0/).



University of Iowa
Roy J. and Lucille A. Carver College of Medicine
Department of Ophthalmology and Visual Sciences
200 Hawkins Drive
Iowa City, IA 52242

[Support Us](#)

Copyright © 2019 The University of Iowa. All Rights Reserved

[Report an issue with this page](#)

[Web Privacy Policy](#) | [Nondiscrimination Statement](#)

Follow



[Receive notification of new cases, sign up here](#)

[Contact Us](#)

[Submit a Suggestion](#)