

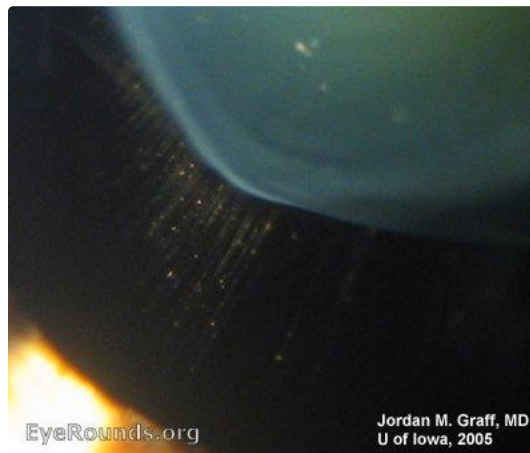
## Zonules of Zinn

Category(ies): Jordan M. Graff, MD

Contributor: [Jordan Graff, MD](#)



The zonules can be readily visualized in the dilated pupil of this patient with Marfan's syndrome (see Marfan's syndrome in this atlas). The Zonules (of Zinn) are a ring of fibrous strands, composed mainly of elastin microfibrils, that extend from the ciliary body to the equator of the lens capsule and thus suspending the lens in place.



In this photograph, a few pigment flecks, likely shed from the iris, can be seen attached to the zonules.

[Enlarge](#) [Download](#)

### Image Permissions:



Ophthalmic Atlas Images by [EyeRounds.org, The University of Iowa](#) are licensed under a [Creative Commons Attribution-NonCommercial-NoDerivs 3.0 Unported License](#).

### Address

University of Iowa  
Roy J. and Lucille A. Carver College  
of Medicine

### Legal

### Related Links

Cataract Surgery for Greenhorns  
EyeTransillumination

### EyeRounds Social Media

Follow

© 2019 University of Iowa

Department of Ophthalmology and  
Visual Sciences  
200 Hawkins Drive  
Iowa City, IA 52242

[Support Us](#)

Copyright © 2019 The University of  
Iowa. All Rights Reserved  
[Report an issue with this page](#)  
[Web Privacy Policy](#) |  
[Nondiscrimination Statement](#)

[Gonioscopy.org](#)  
[Iowa Glaucoma Curriculum](#)  
[Iowa Wet Lab](#)  
[Patient Information](#)  
[Stone Rounds](#)  
[The Best Hits Bookshelf](#)



Receive notification of new cases,  
[sign up here](#)  
[Contact Us](#)  
[Submit a Suggestion](#)