

Traumatic iris sphincter tears

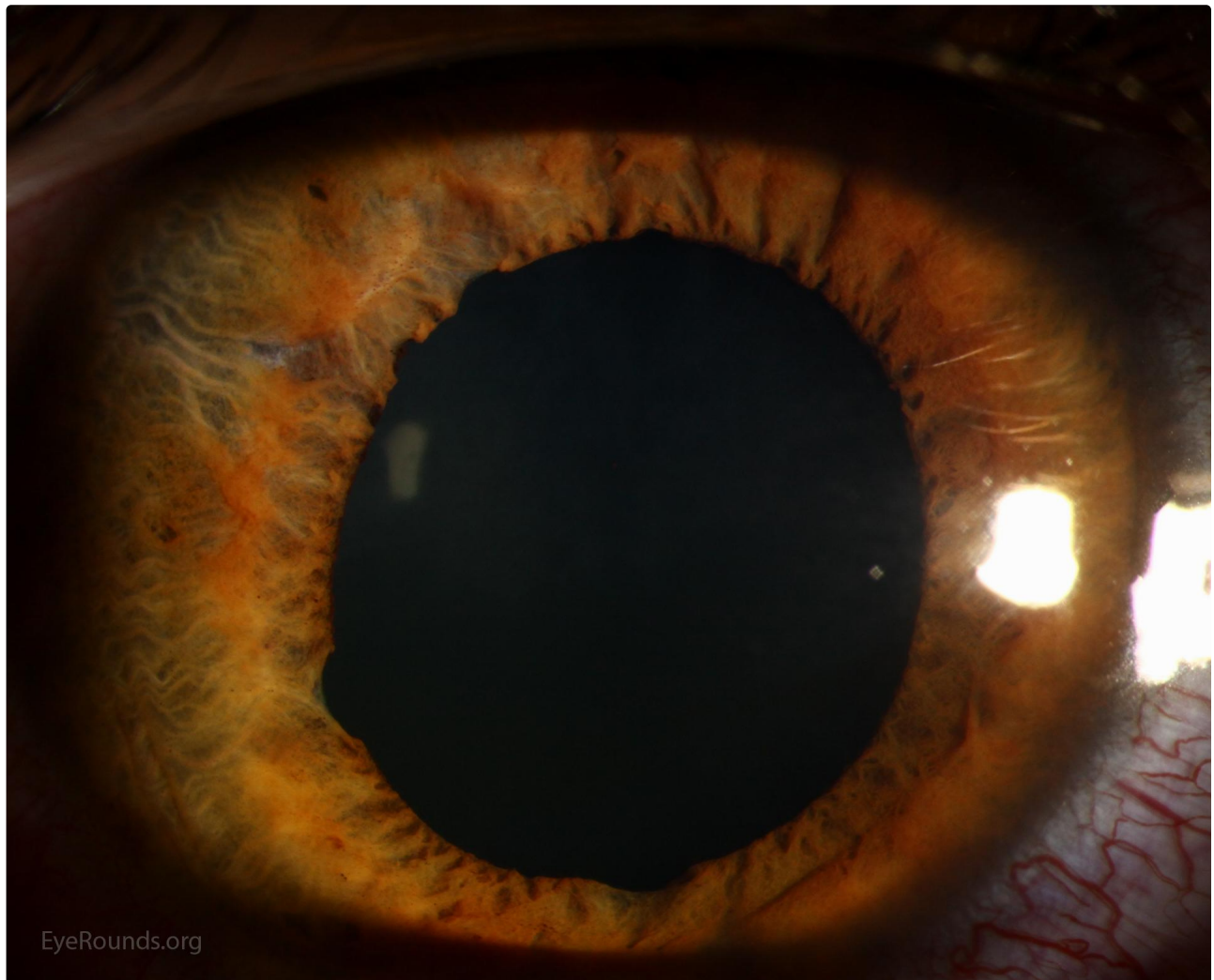
Category(ies): [Glaucoma](#), [Iris](#), [Trauma](#)

Contributor: [Jesse Vislisel, MD](#)

Photographer: [Antoinette Venckus, CRA](#)



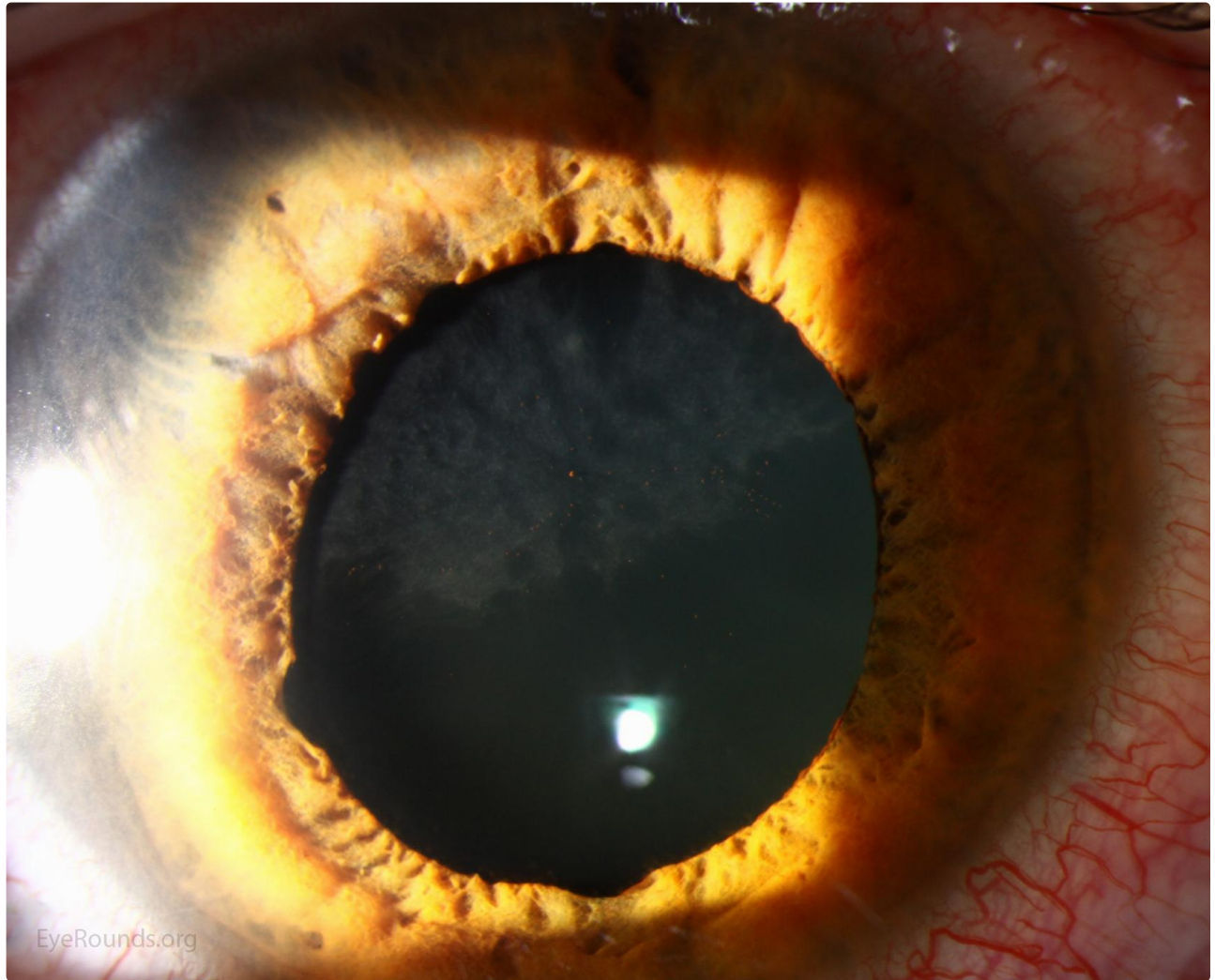
Tears in the iris sphincter may occur after blunt eye trauma and result in persistent mydriasis. These photos, taken 4 days after blunt trauma to the eye, show multiple scalloped tears in the iris sphincter along the pupillary margin inferiorly and temporally. Also visible is the traumatic anterior subcapsular cataract.



EyeRounds.org

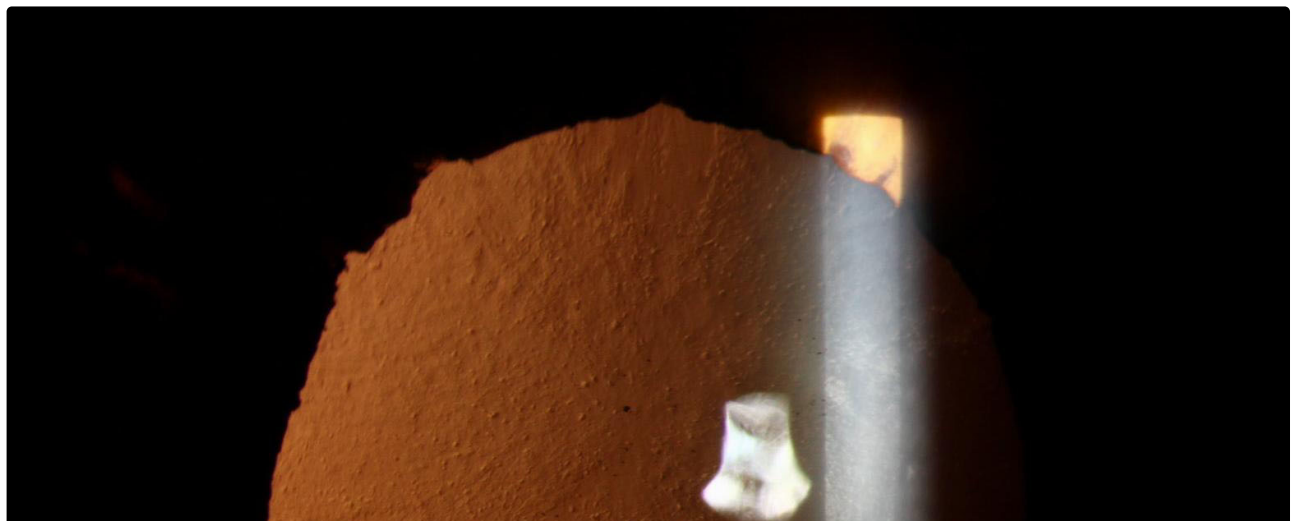
[Enlarge](#)

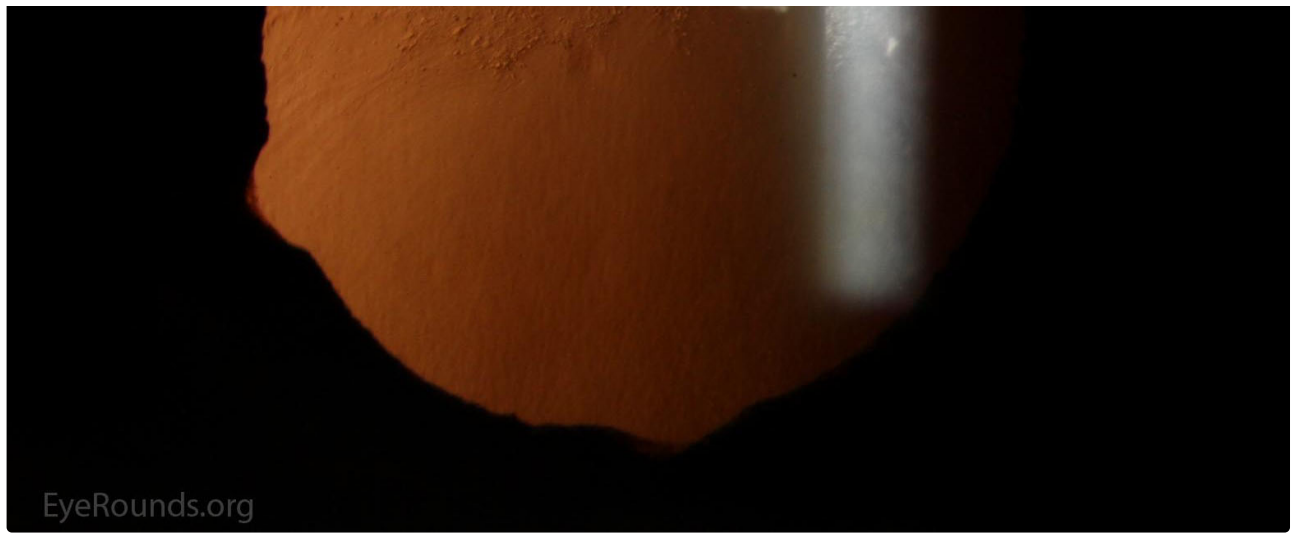
[Download](#)



[Enlarge](#)

[Download](#)





[Enlarge](#) [Download](#)

Image Permissions:



Ophthalmic Atlas Images by [EyeRounds.org](#), [The University of Iowa](#) are licensed under a [Creative Commons Attribution-NonCommercial-NoDerivs 3.0 Unported License](#).

Address

University of Iowa
Roy J. and Lucille A. Carver College
of Medicine
Department of Ophthalmology and
Visual Sciences
200 Hawkins Drive
Iowa City, IA 52242

[Support Us](#)

Legal

Copyright © 2019 The University of
Iowa. All Rights Reserved
[Report an issue with this page](#)
[Web Privacy Policy](#) |
[Nondiscrimination Statement](#)

Related Links

[Cataract Surgery for Greenhorns](#)
[EyeTransillumination](#)
[Gonioscopy.org](#)
[Iowa Glaucoma Curriculum](#)
[Iowa Wet Lab](#)
[Patient Information](#)
[Stone Rounds](#)
[The Best Hits Bookshelf](#)

EyeRounds Social Media

Follow



Receive notification of new cases,
[sign up here](#)
[Contact Us](#)
[Submit a Suggestion](#)