

## Tapetal sheen associated with the carrier state of X-linked retinitis pigmentosa

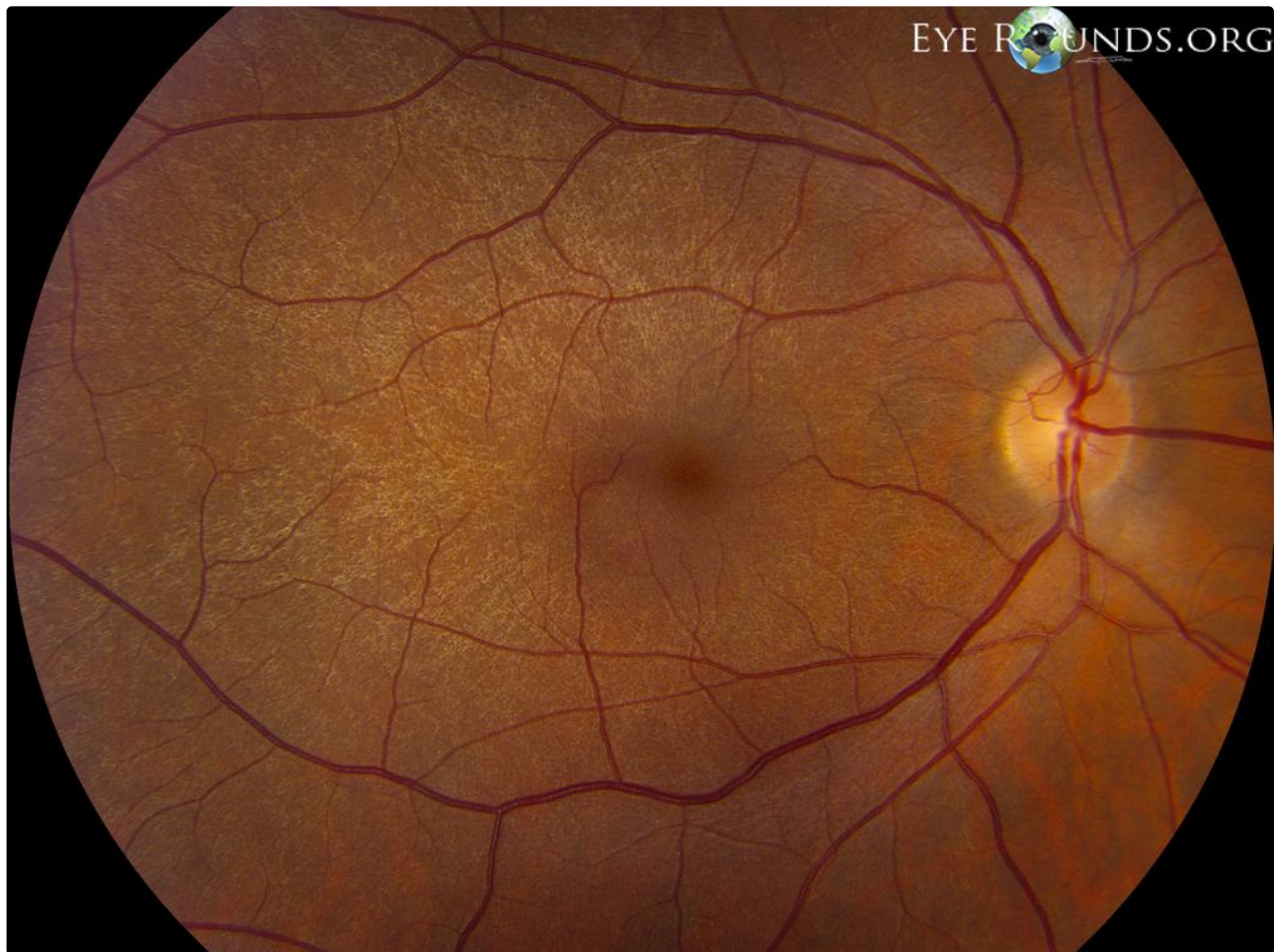
**Category(ies):** [Retina](#), [Vitreous](#), [Genetics](#)

**Contributor:** [Jesse Vislisel, MD](#)

**Photographer:** [Brice Critser, CRA](#)

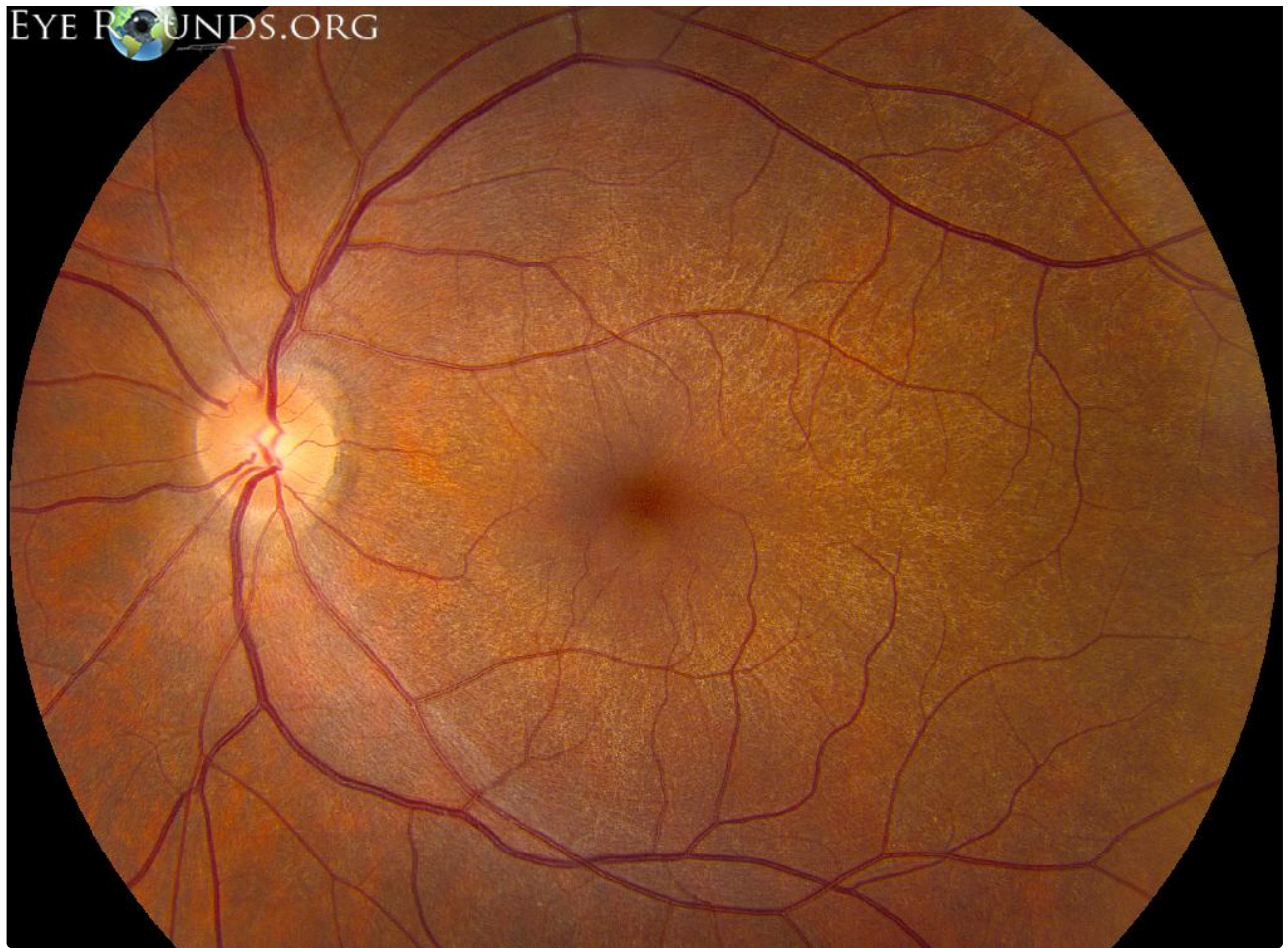


Female carriers of X-linked recessive eye diseases may show variable expression of the disorders depending on the timing of X-inactivation. Patients with late X-inactivation have widely dispersed affected cells intermixed with unaffected cells, sometimes producing a characteristic tapetal reflex or "metallic sheen" as seen in this photograph. This patient is an asymptomatic carrier of X-linked retinitis pigmentosa who has two affected sons.



Right Eye

[Enlarge](#) [Download](#)



Right Eye

[Enlarge](#) [Download](#)

### Image Permissions:



Ophthalmic Atlas Images by [EyeRounds.org](#), [The University of Iowa](#) are licensed under a [Creative Commons Attribution-NonCommercial-NoDerivs 3.0 Unported License](#).

### Address

University of Iowa  
Roy J. and Lucille A. Carver College  
of Medicine  
Department of Ophthalmology and  
Visual Sciences  
200 Hawkins Drive  
Iowa City, IA 52242

[Support Us](#)

### Legal

Copyright © 2019 The University of  
Iowa. All Rights Reserved  
[Report an issue with this page](#)  
[Web Privacy Policy](#) |  
[Nondiscrimination Statement](#)

### Related Links

[Cataract Surgery for Greenhorns](#)  
[EyeTransillumination](#)  
[Gonioscopy.org](#)  
[Iowa Glaucoma Curriculum](#)  
[Iowa Wet Lab](#)  
[Patient Information](#)  
[Stone Rounds](#)  
[The Best Hits Bookshelf](#)

### EyeRounds Social Media

Follow



Receive notification of new cases,  
sign up here  
[Contact Us](#)  
[Submit a Suggestion](#)